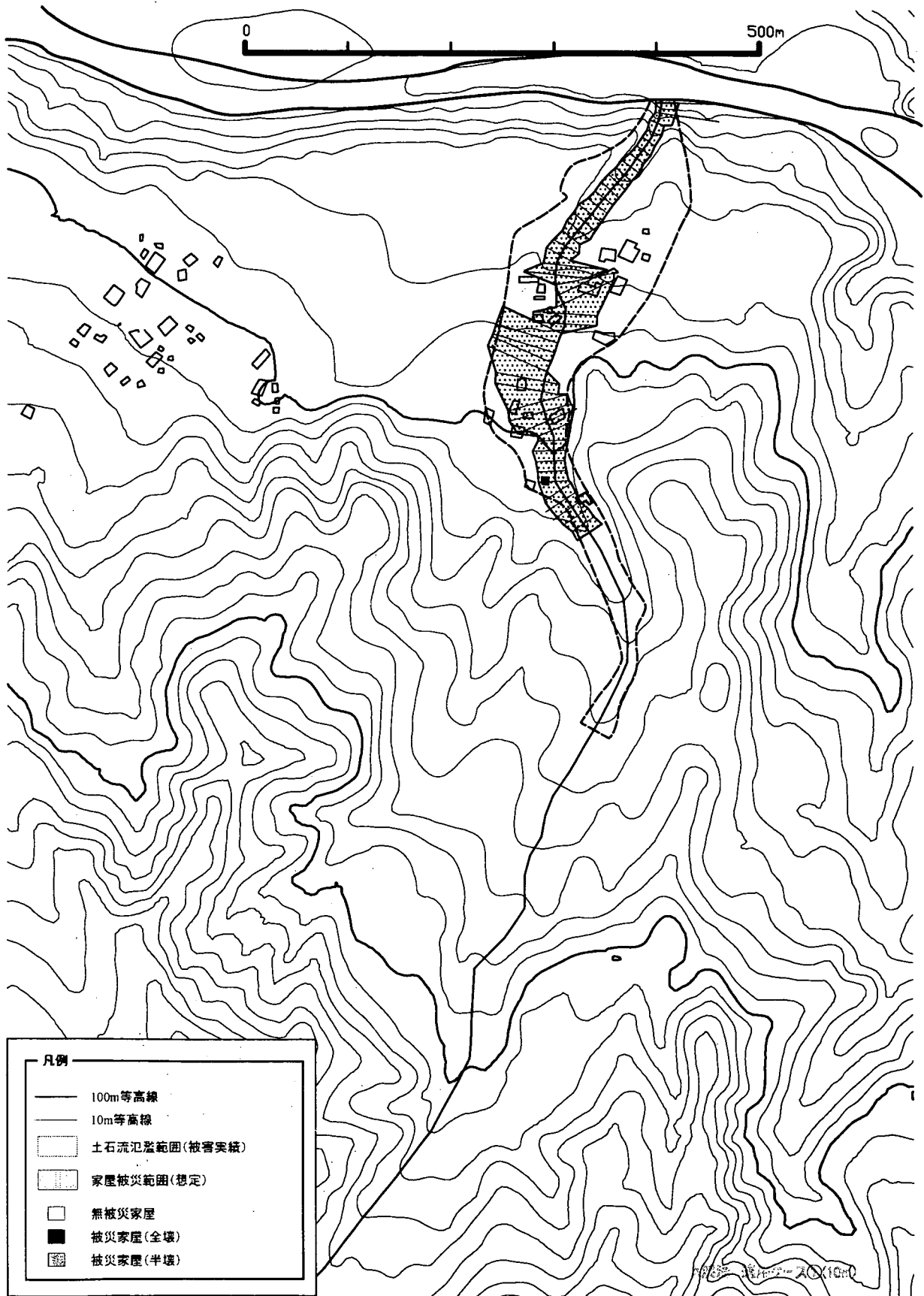


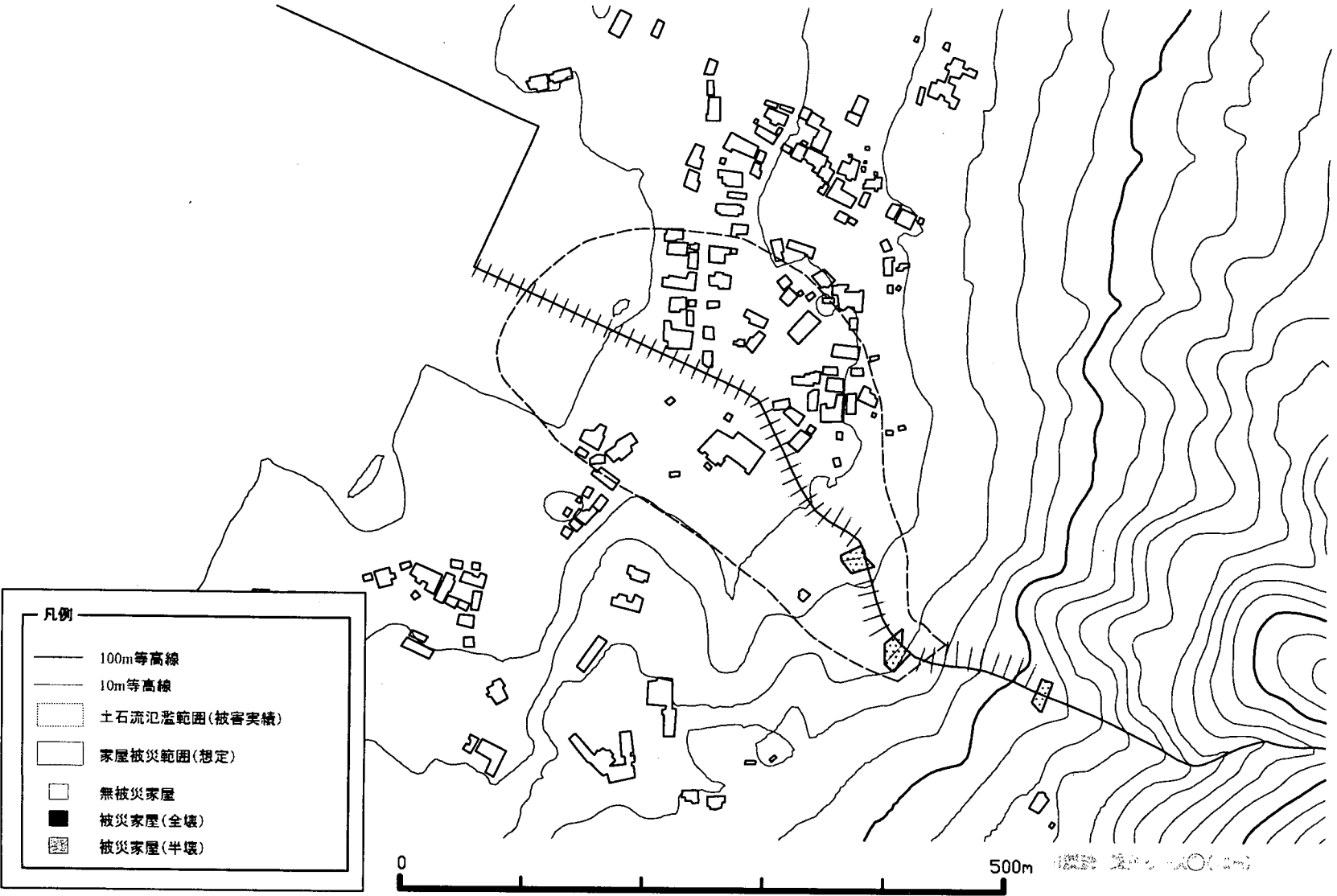
巻末資料 2. 家屋被災範囲の設定結果

次頁以降、表-3. 1に示した16事例で設定した家屋被災範囲を示す。

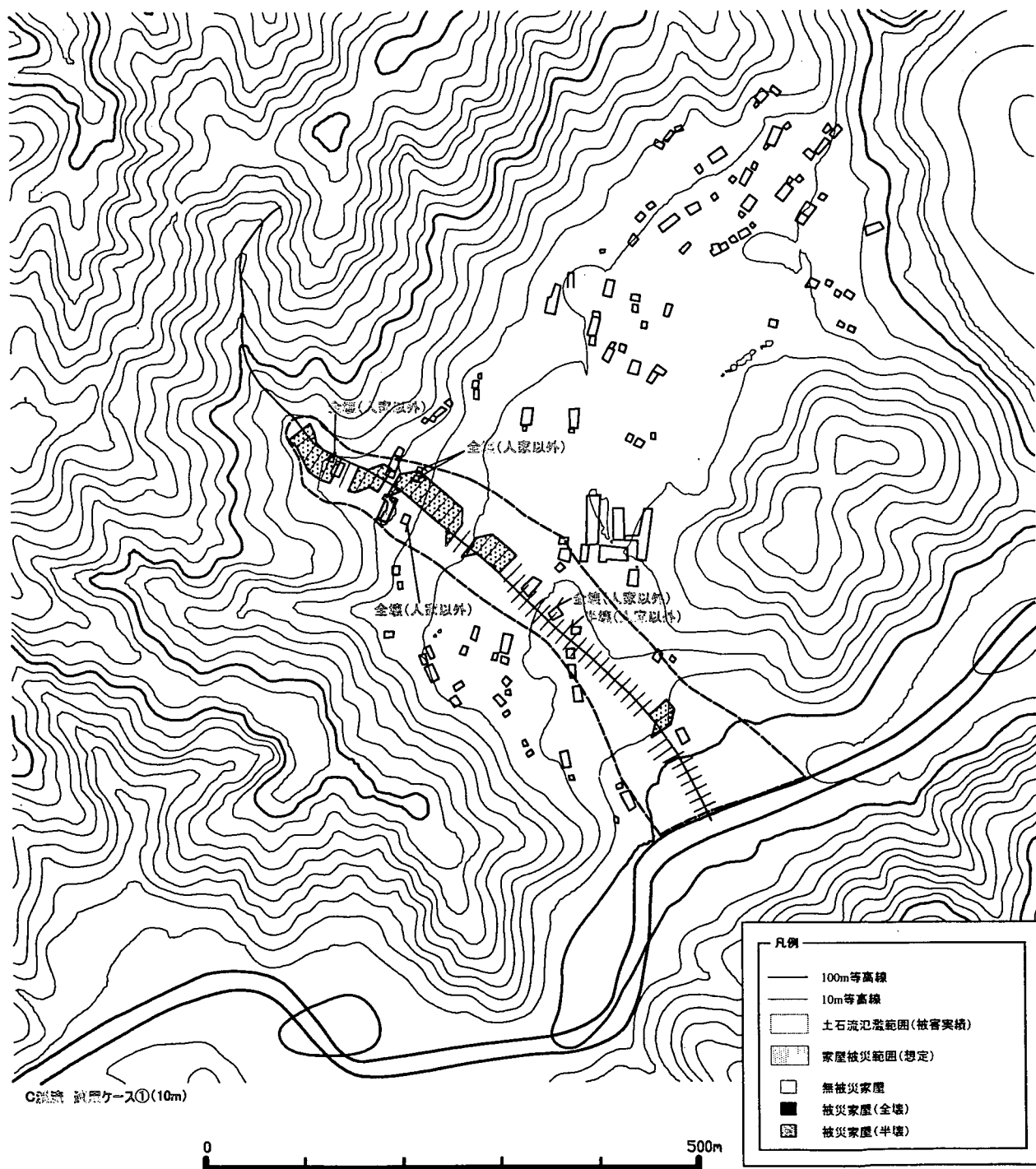
適用ケース① A 溪流 (10m)



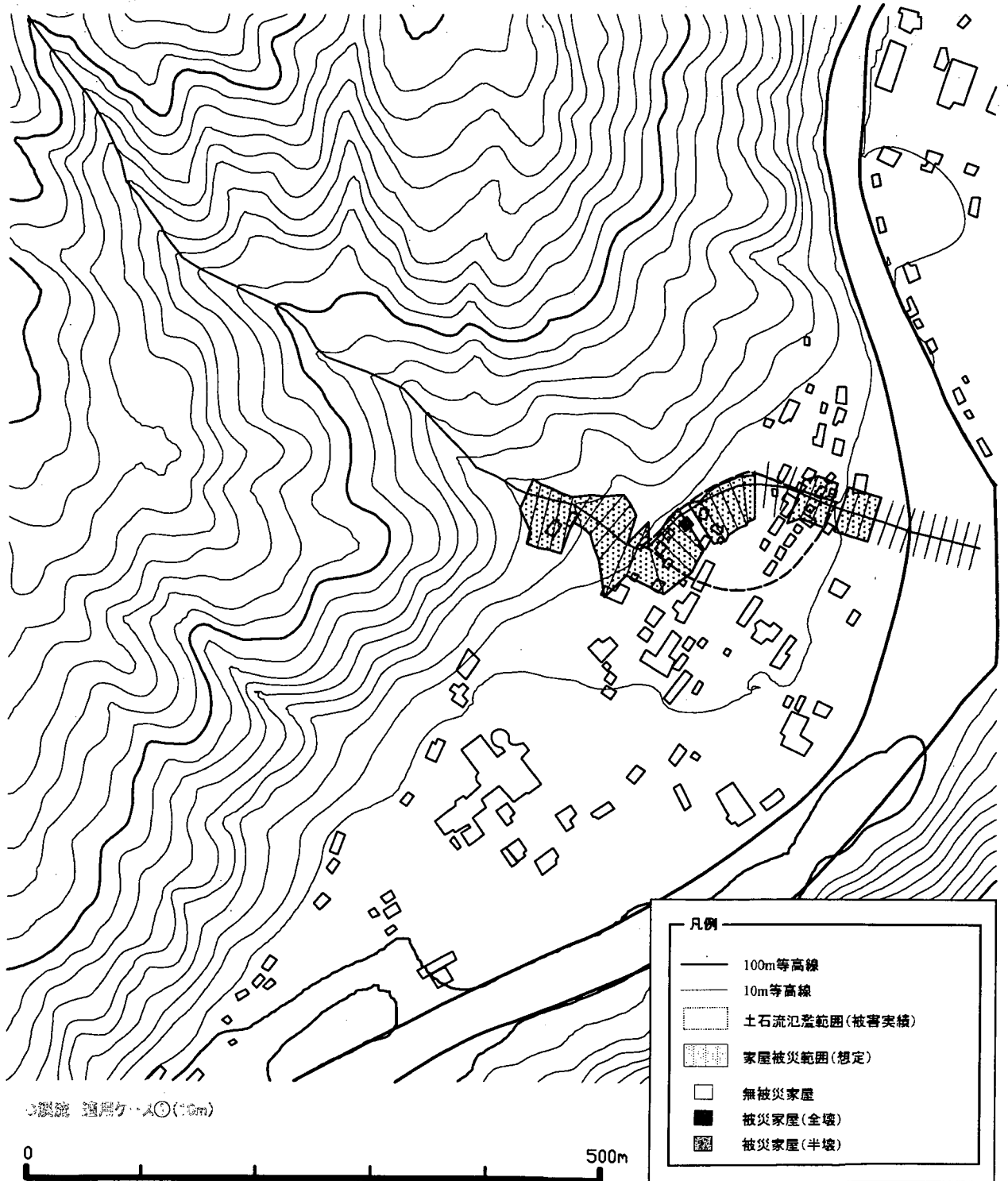
適用ケース① B 溪流 (10m)



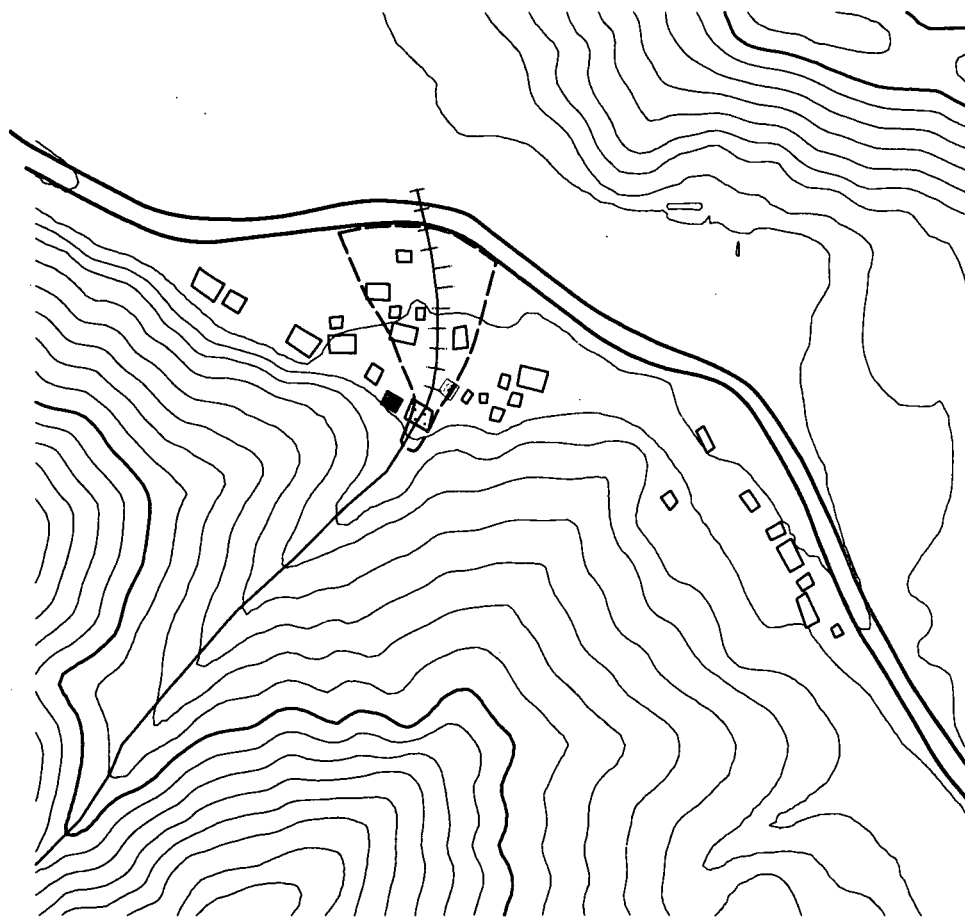
適用ケース① C溪流 (10m)



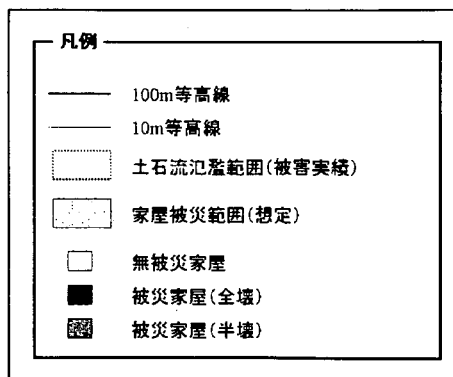
適用ケース① D 溪流 (10m)



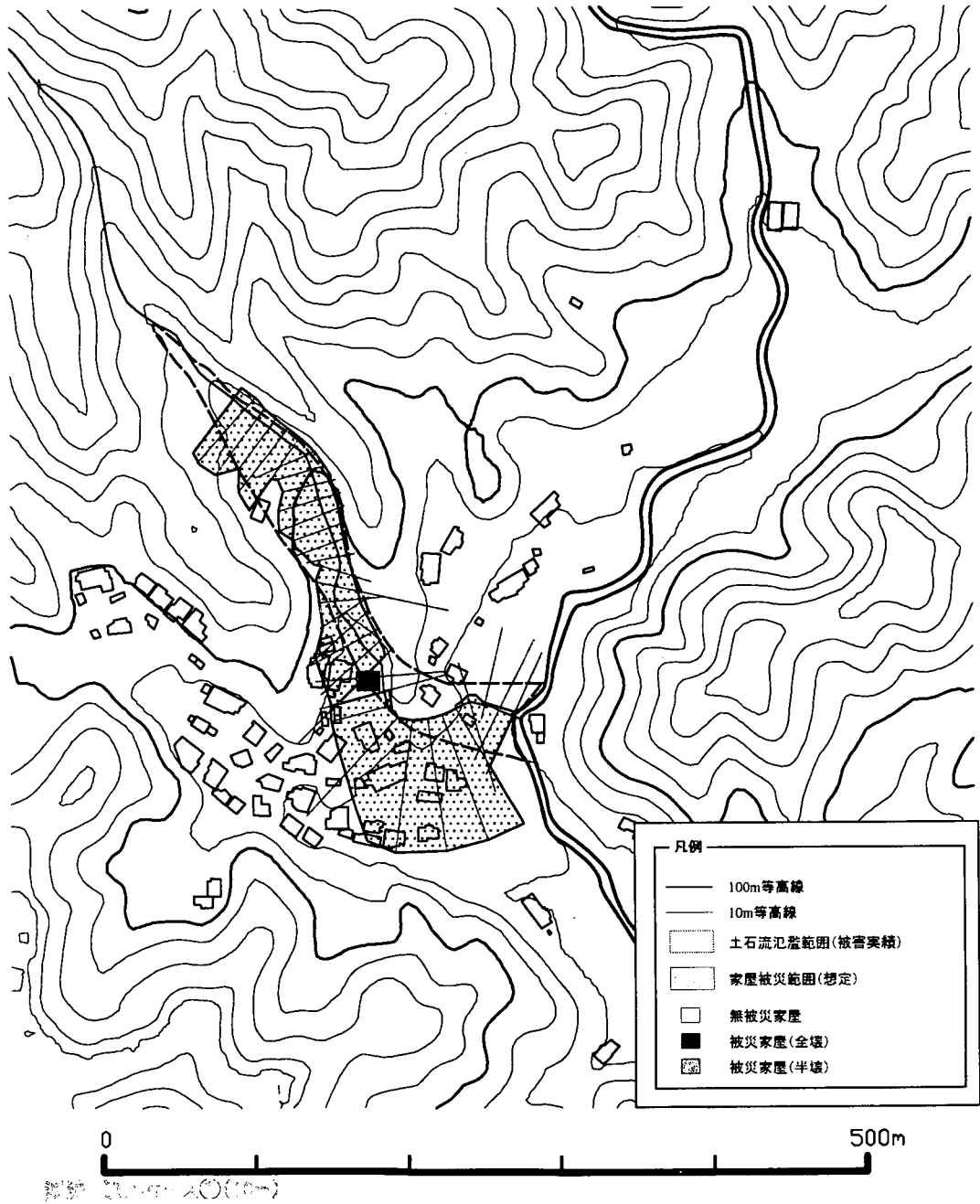
適用ケース① E 溪流 (10m)



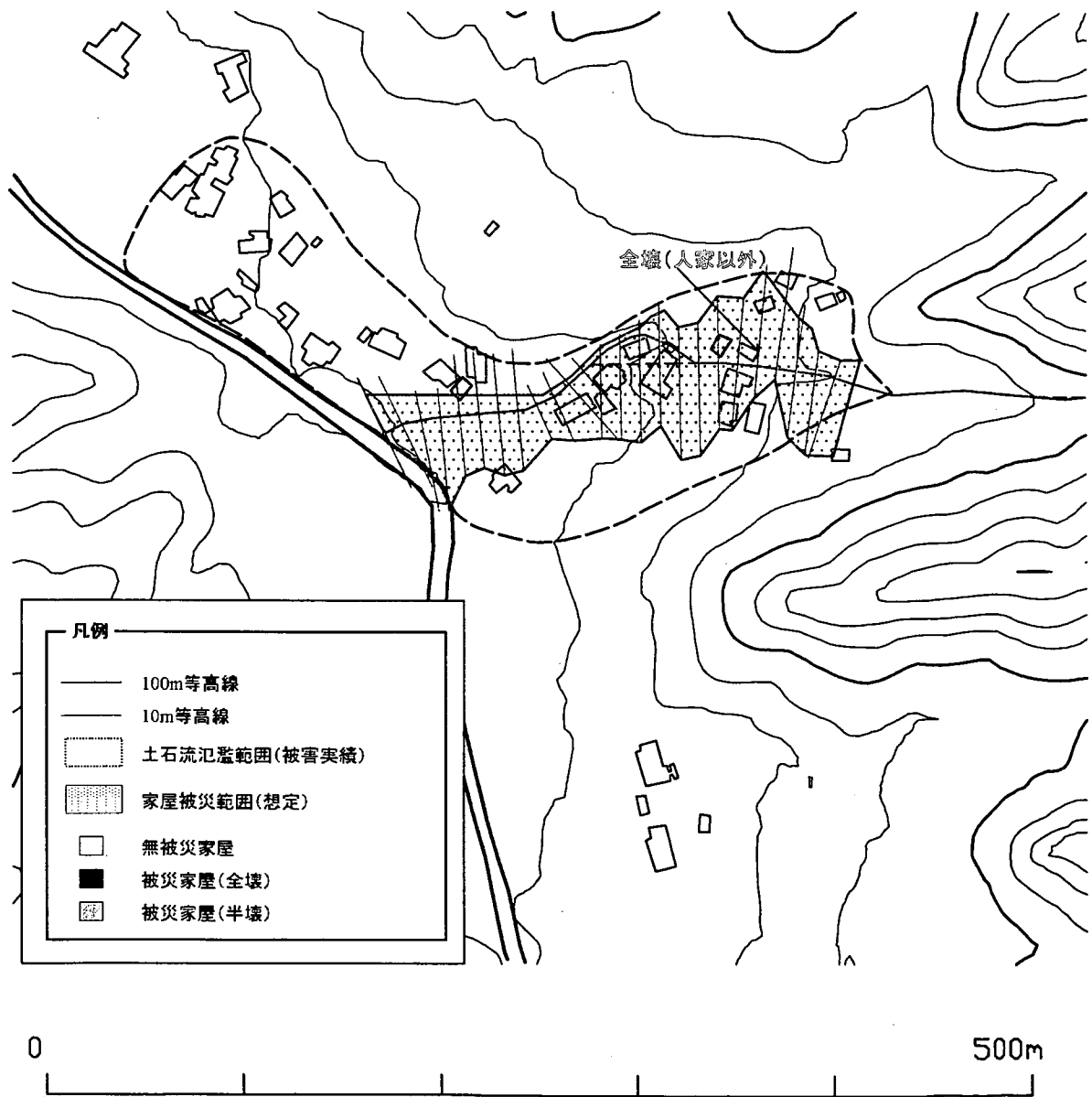
E 溪流 適用ケース①(10m)



適用ケース① F 溪流 (10m)

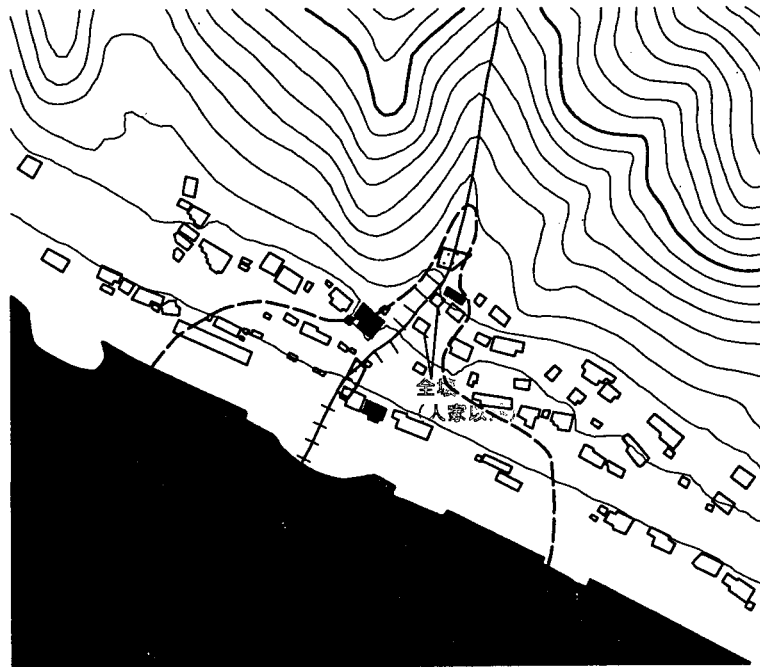


適用ケース① G 溪流 (10m)

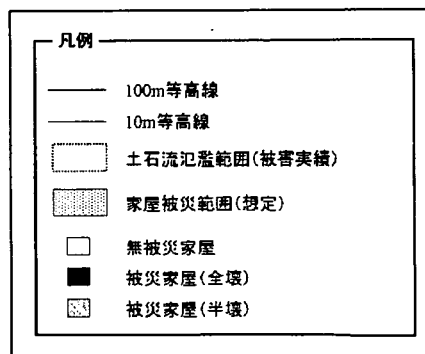


G 溪流 適用ケース①(10m)

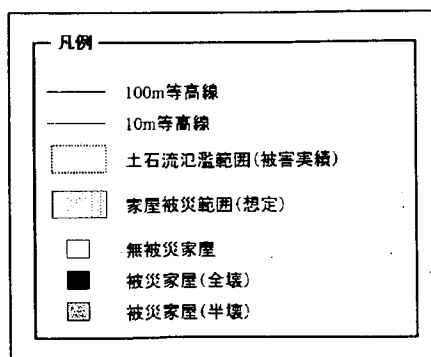
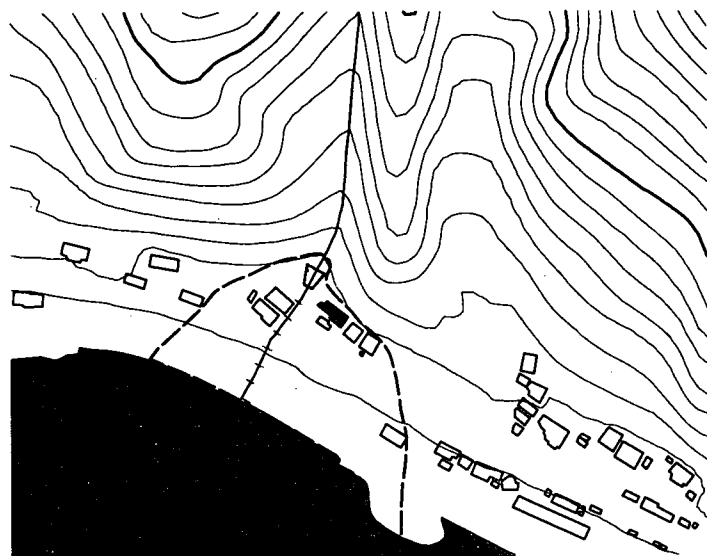
適用ケース① H溪流 (10m)



H溪流 適用ケース①(10m)



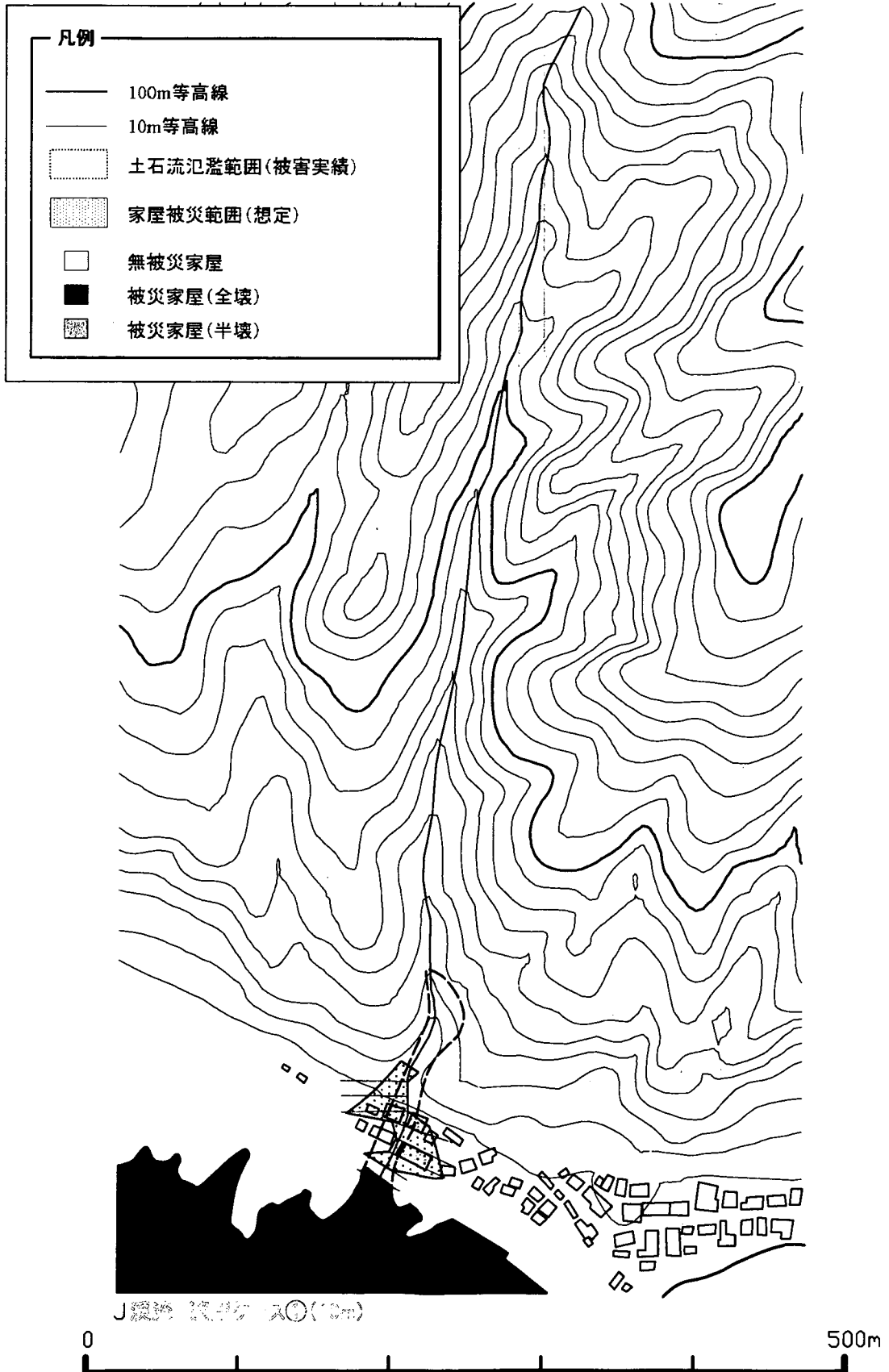
適用ケース① | 溪流 (10m)



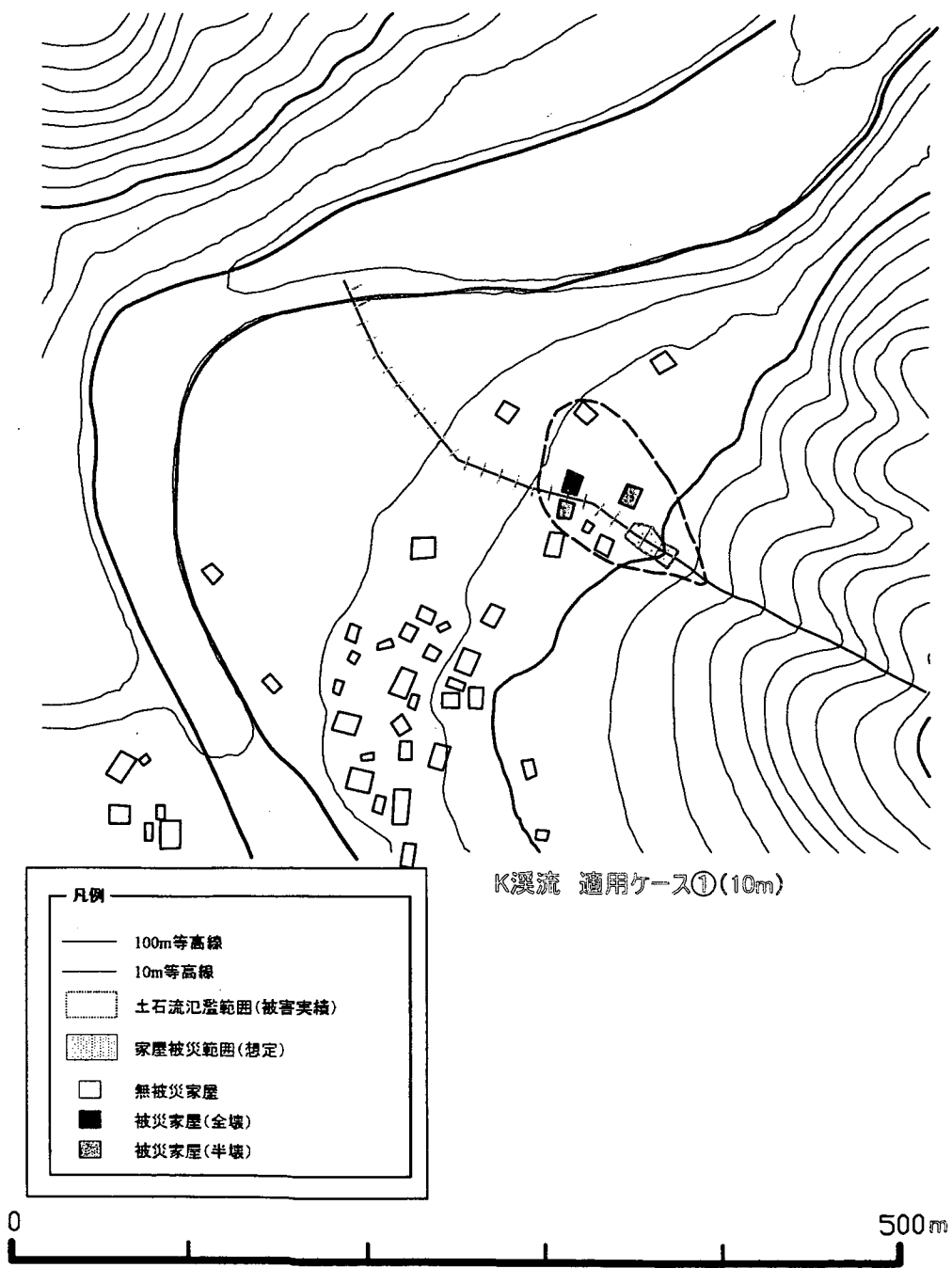
溪流 適用ケース①(10m)



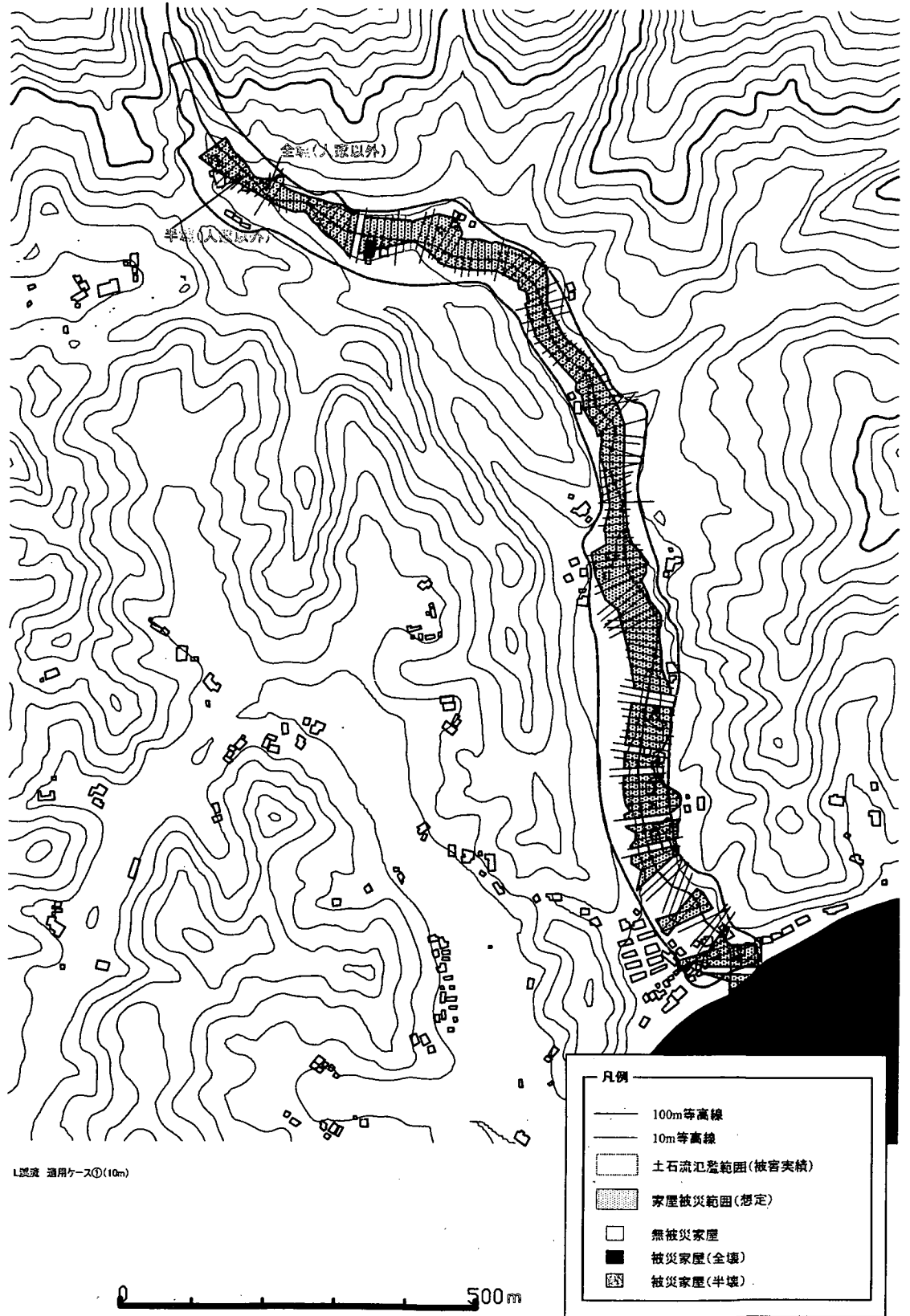
適用ケース① J 溪流 (10m)



適用ケース① K溪流 (10m)

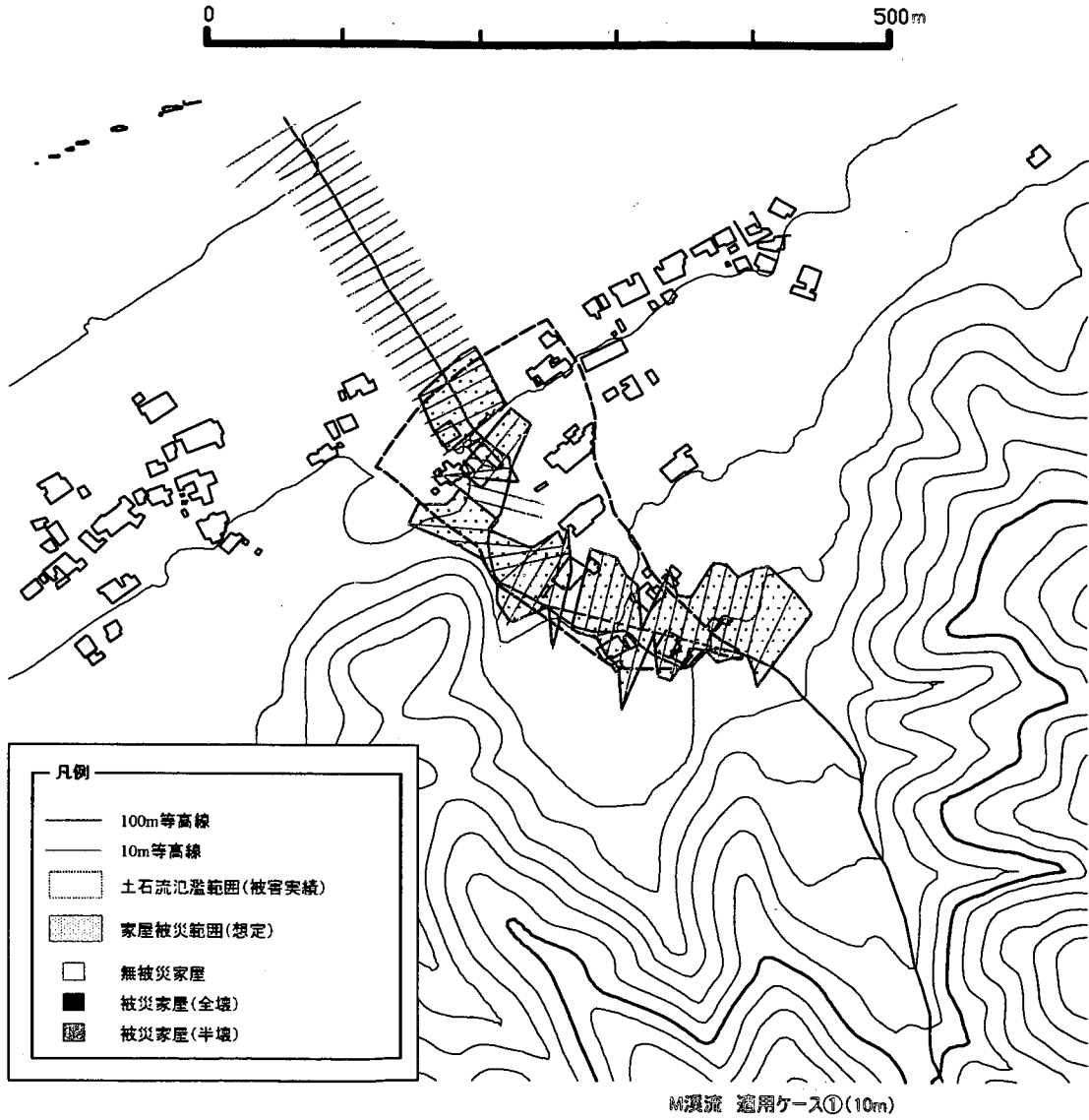


適用ケース① L 溪流 (10m)

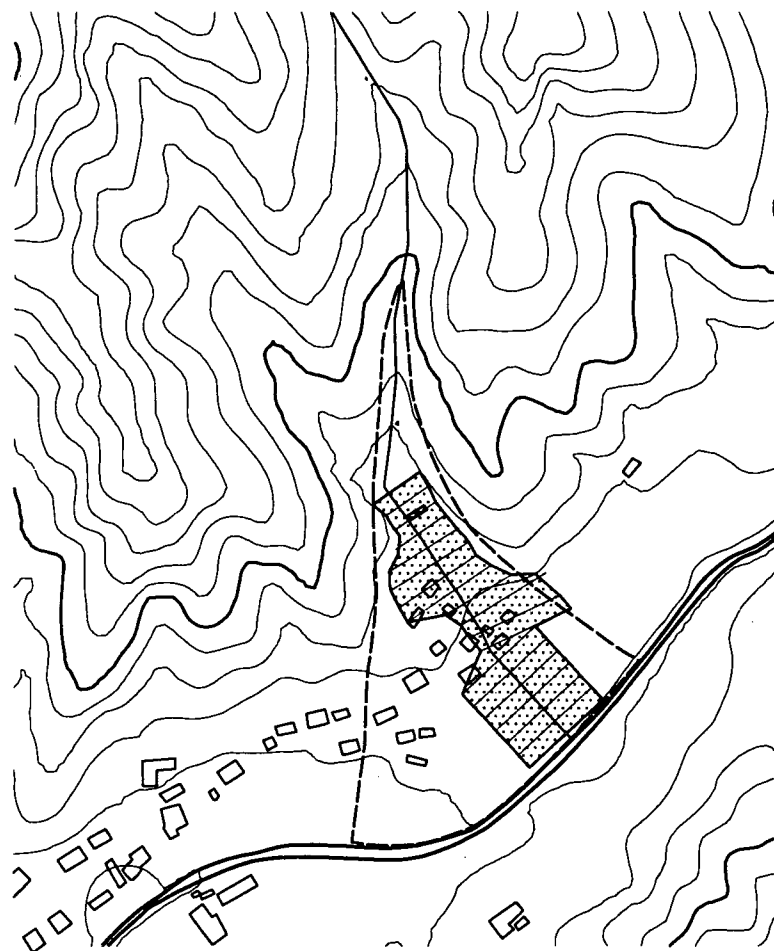


L 溪流 適用ケース① (10m)

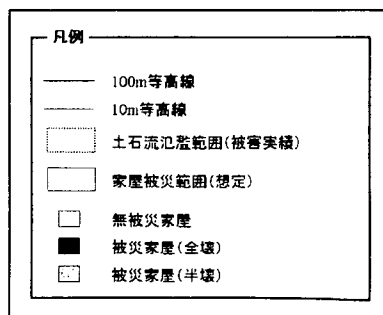
適用ケース① M溪流 (10m)



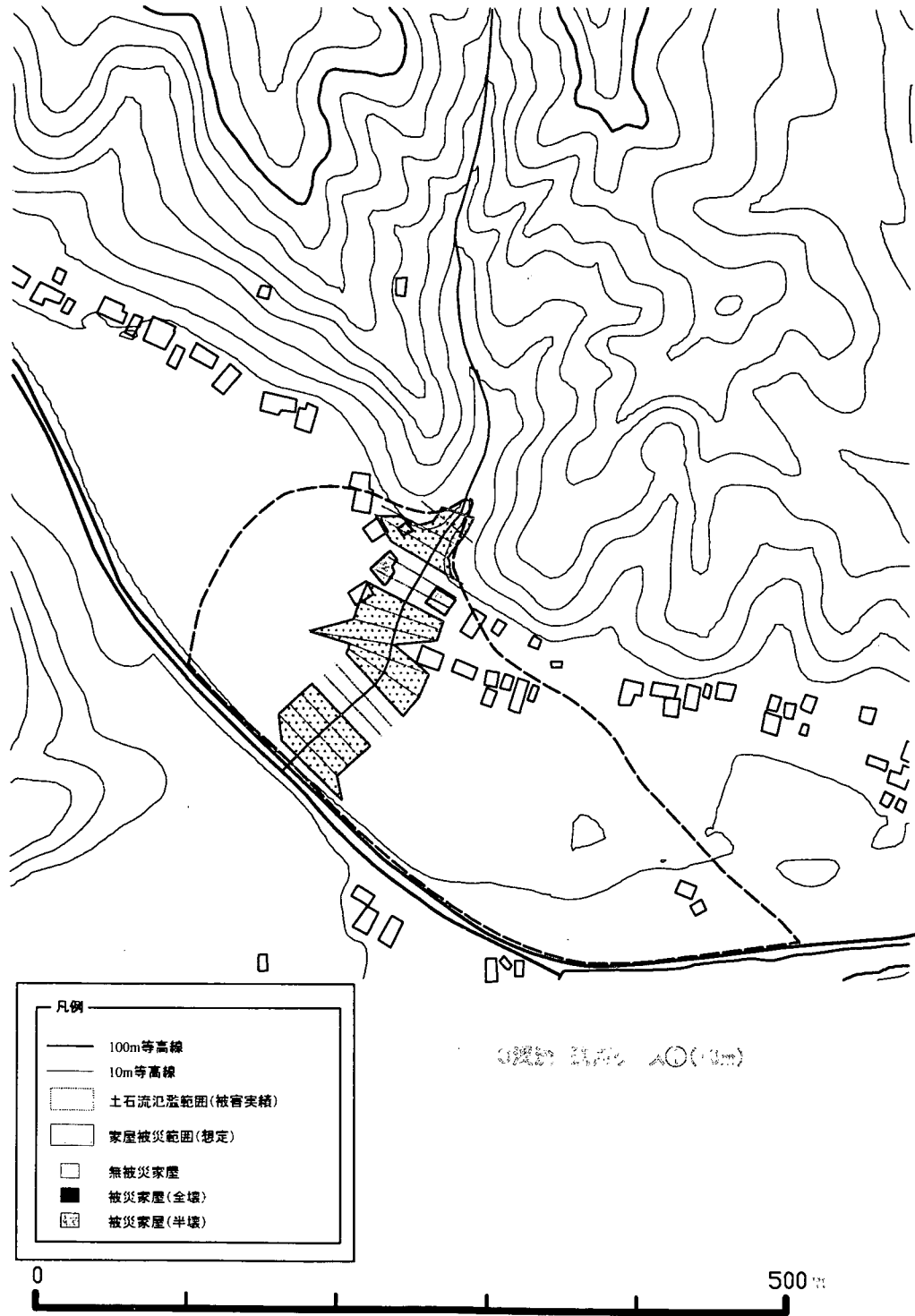
適用ケース① N 溪流 (10m)



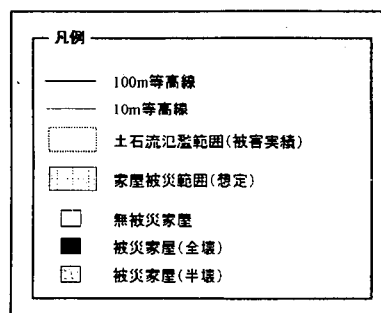
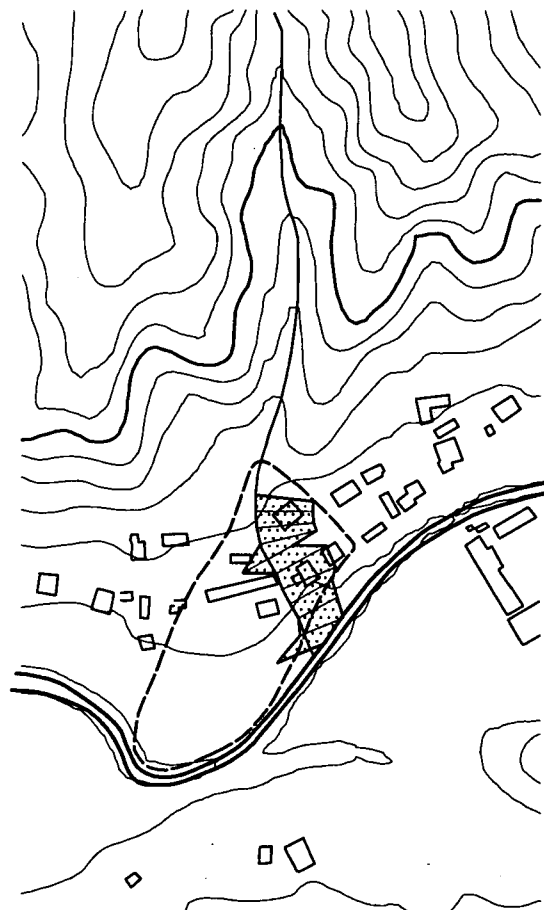
N 溪流 10(10m)



適用ケース① 0 溪流 (10m)



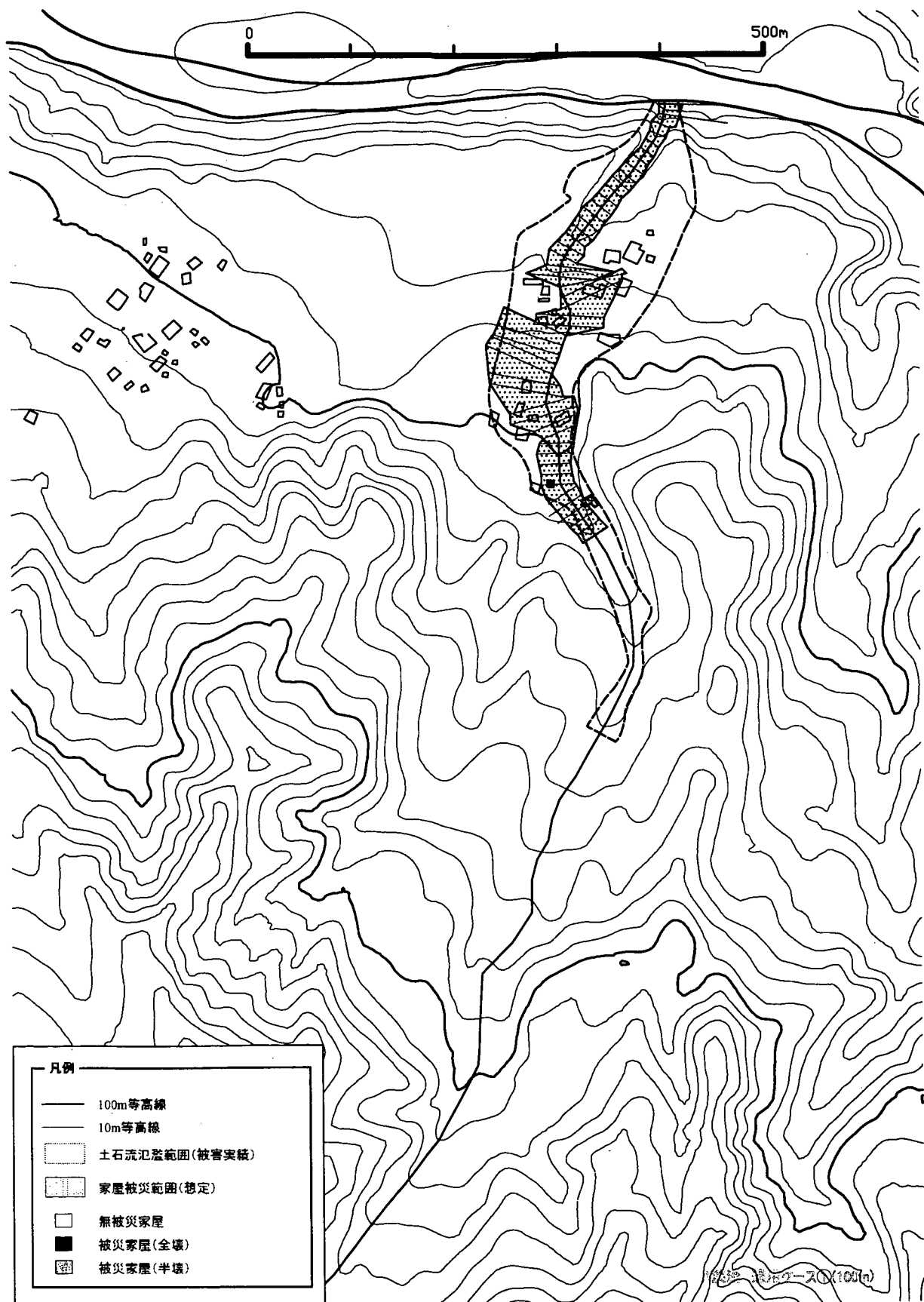
適用ケース① P 溪流 (10m)



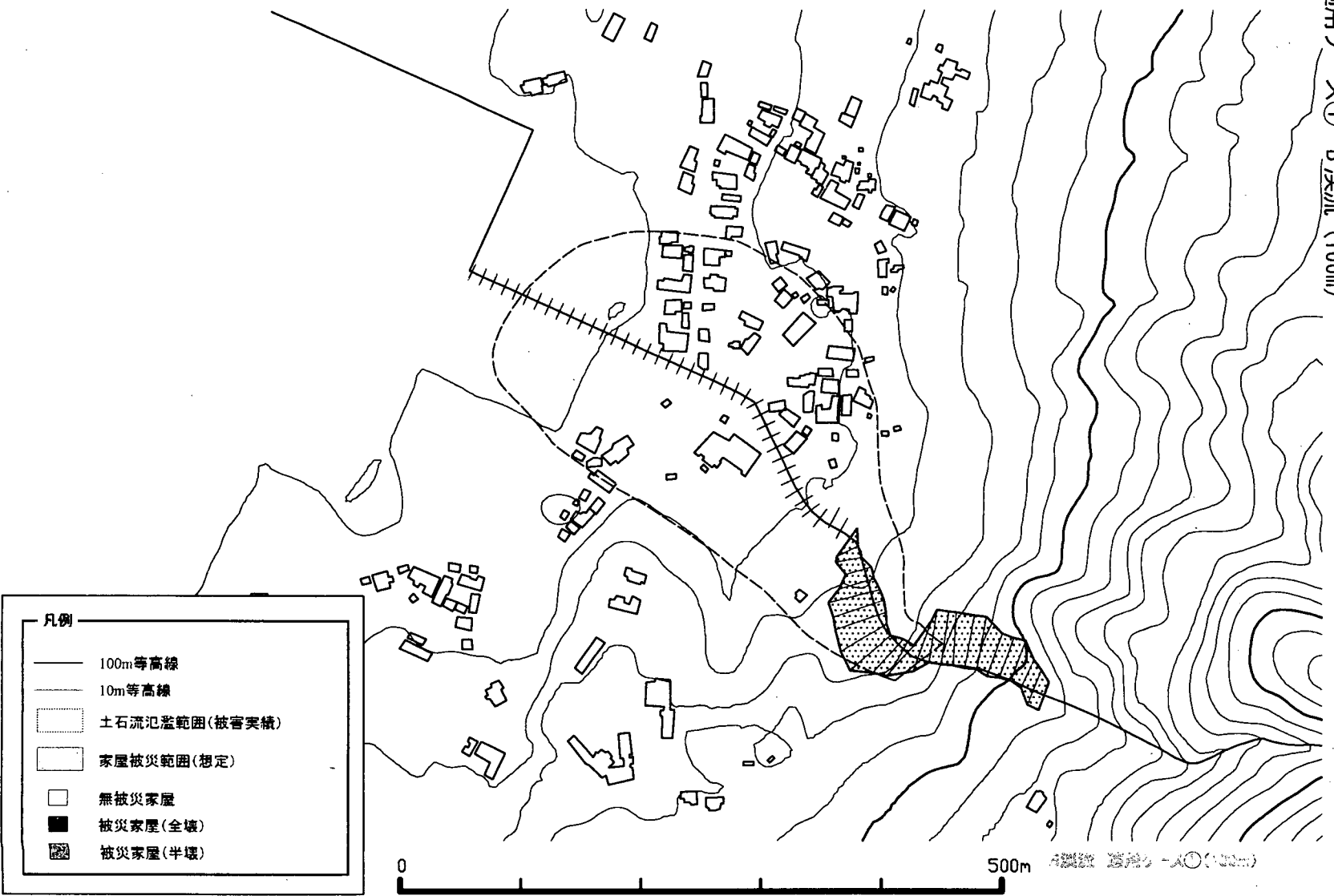
P 溪流 適用ケース①(10m)



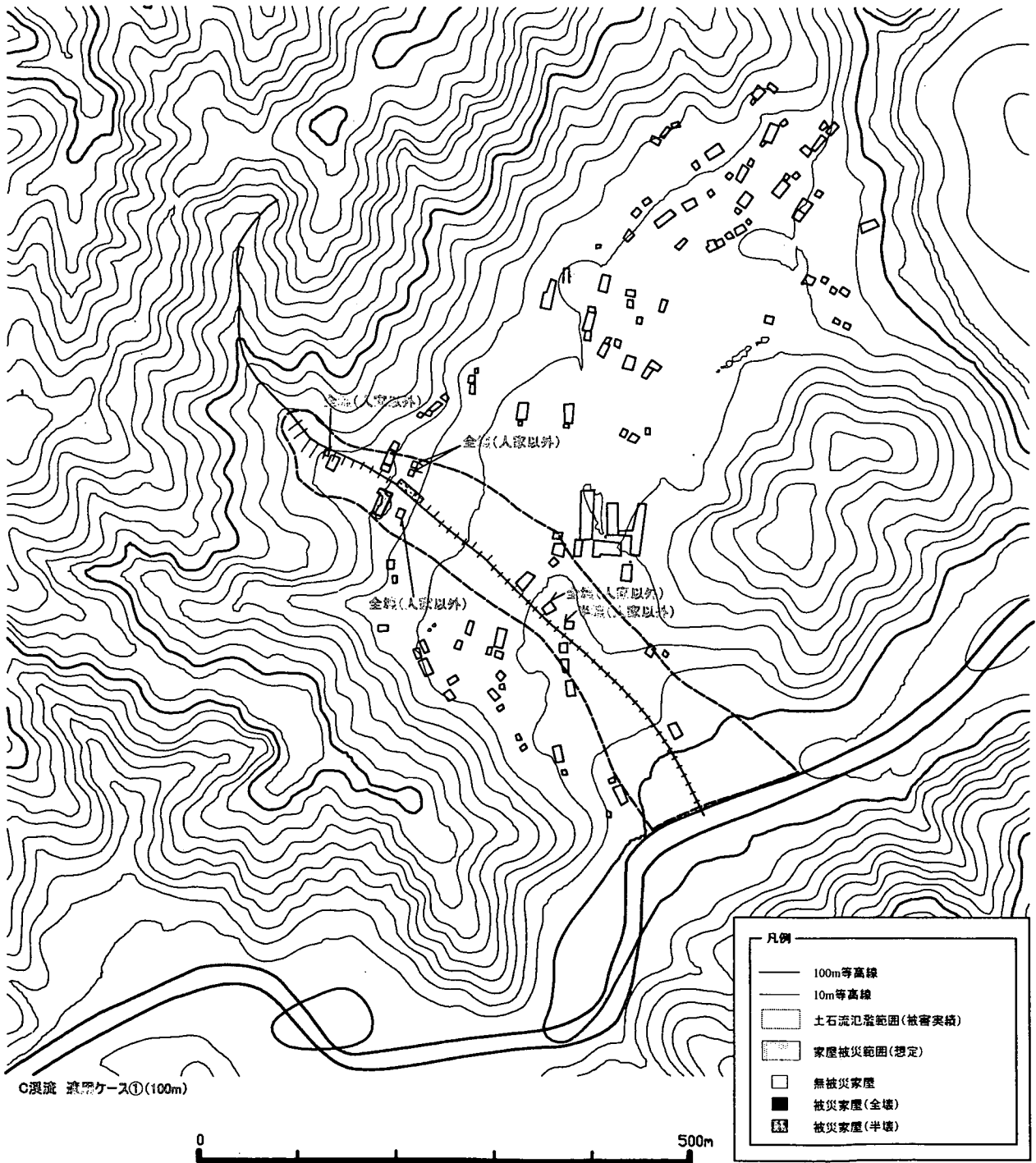
適用ケース① A 溪流 (100m)



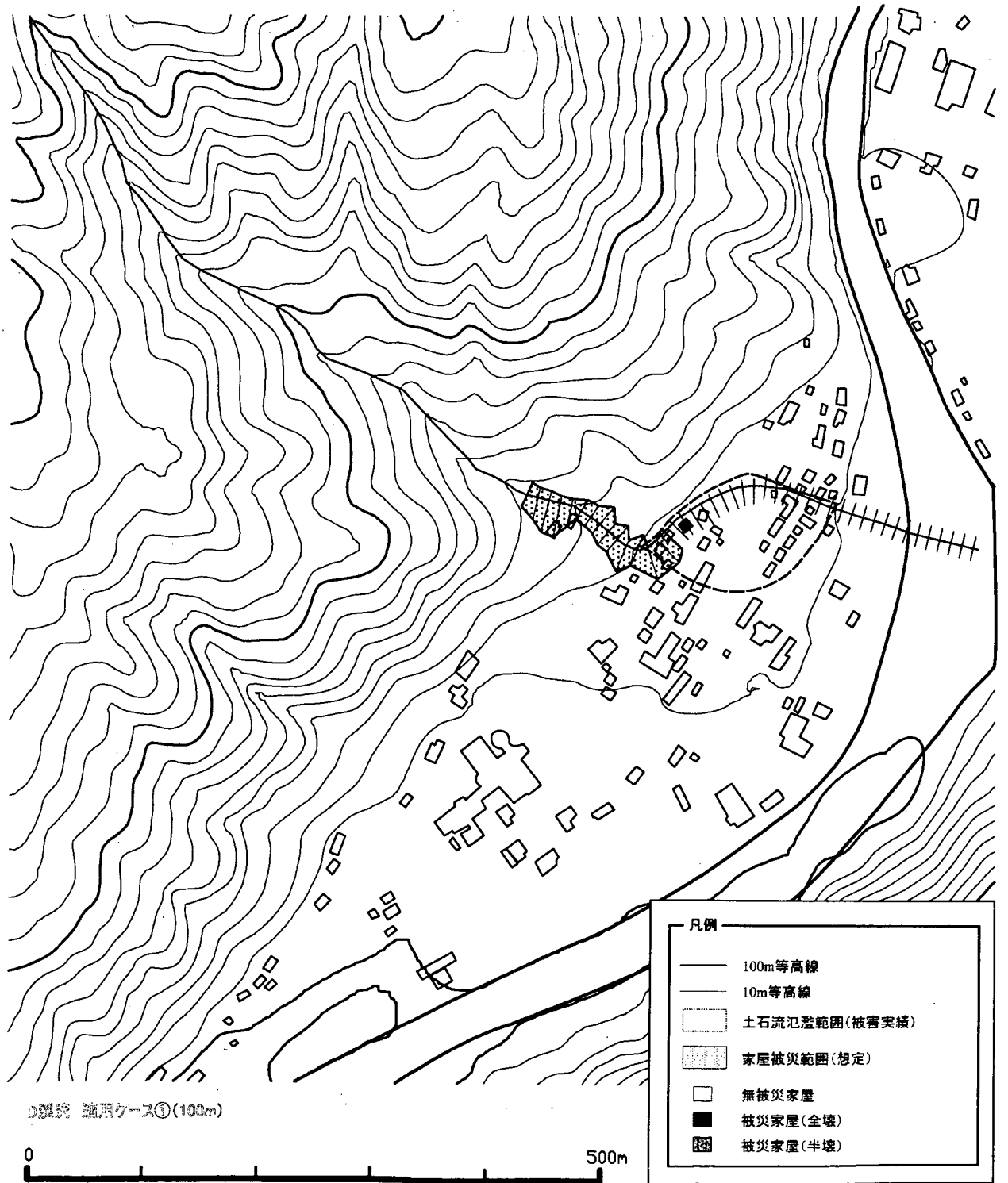
適用ケース① B 溪流 (100m)



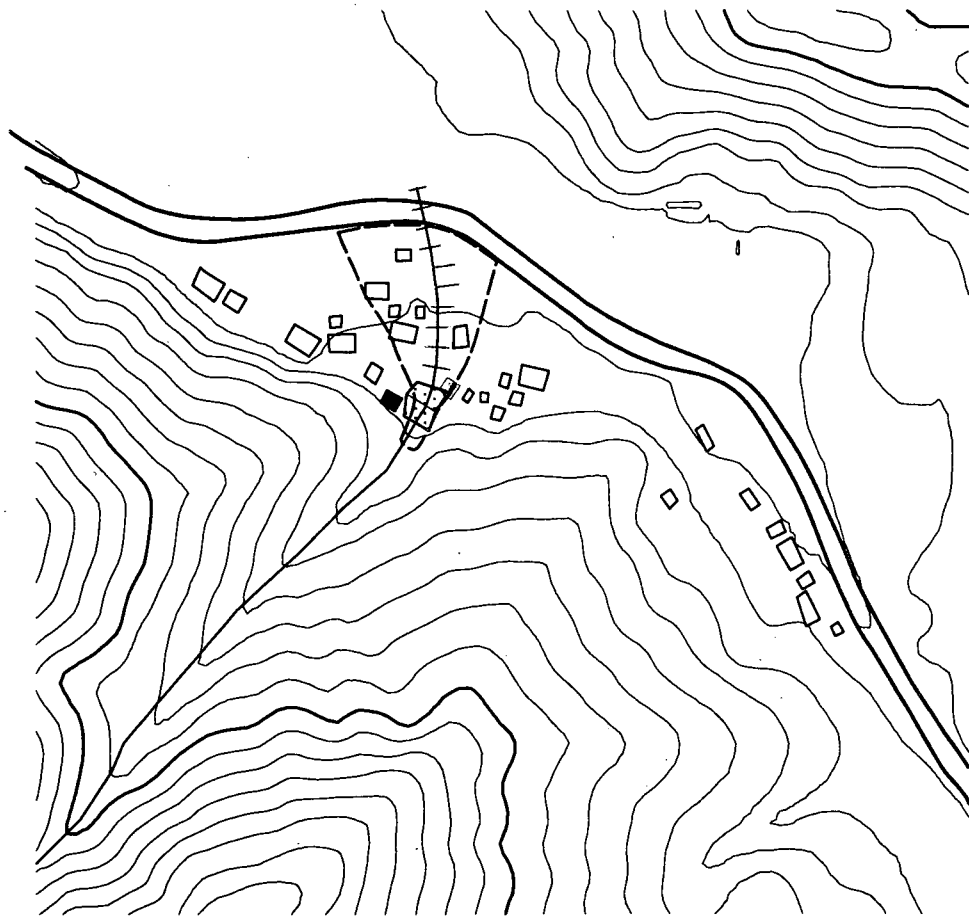
適用ケース① C 溪流 (100m)



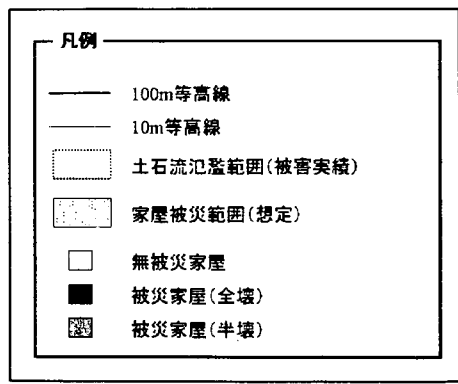
適用ケース① D 溪流 (100m)



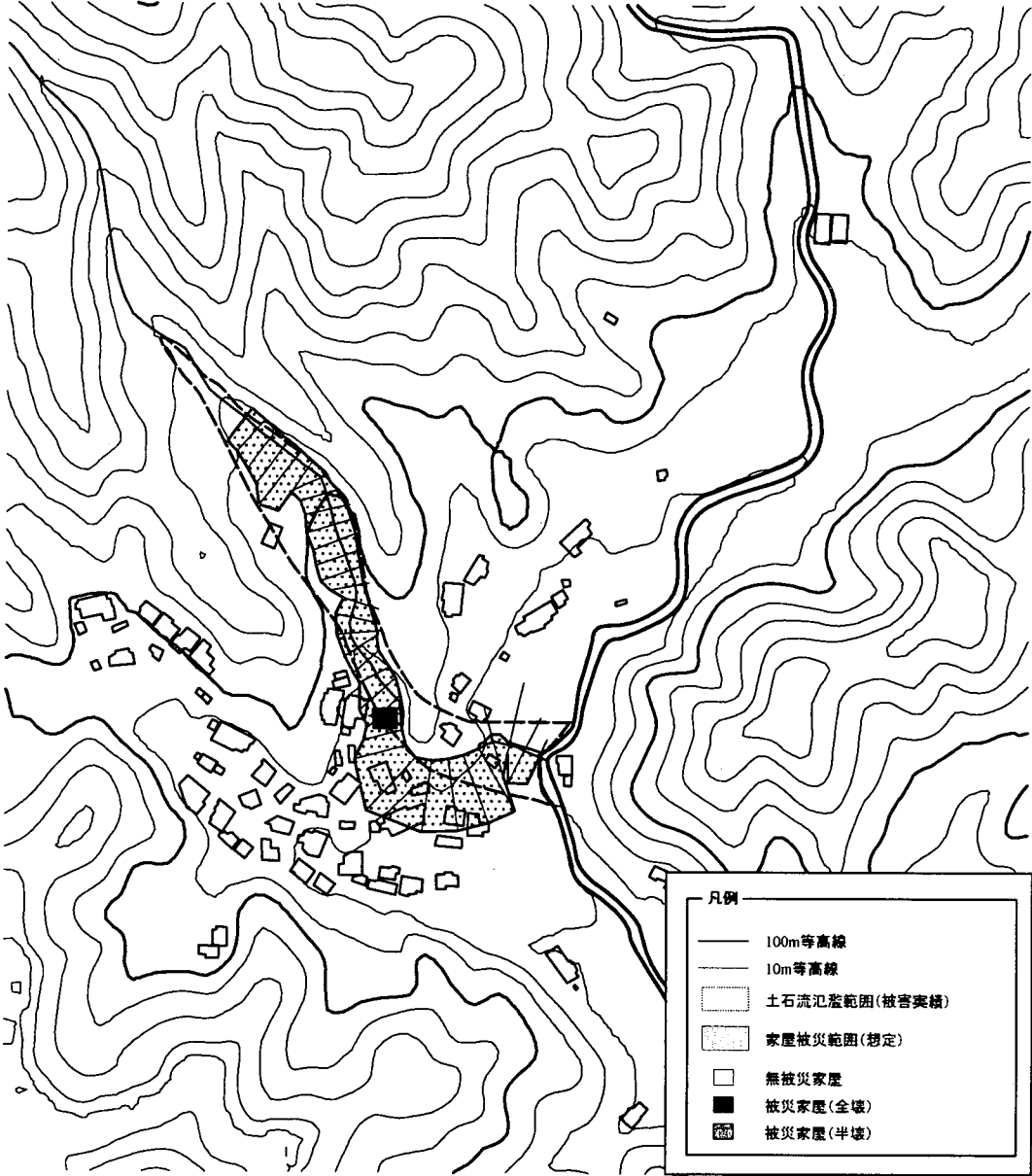
適用ケース① E 溪流 (100m)



E 溪流 適用ケース①(100m)

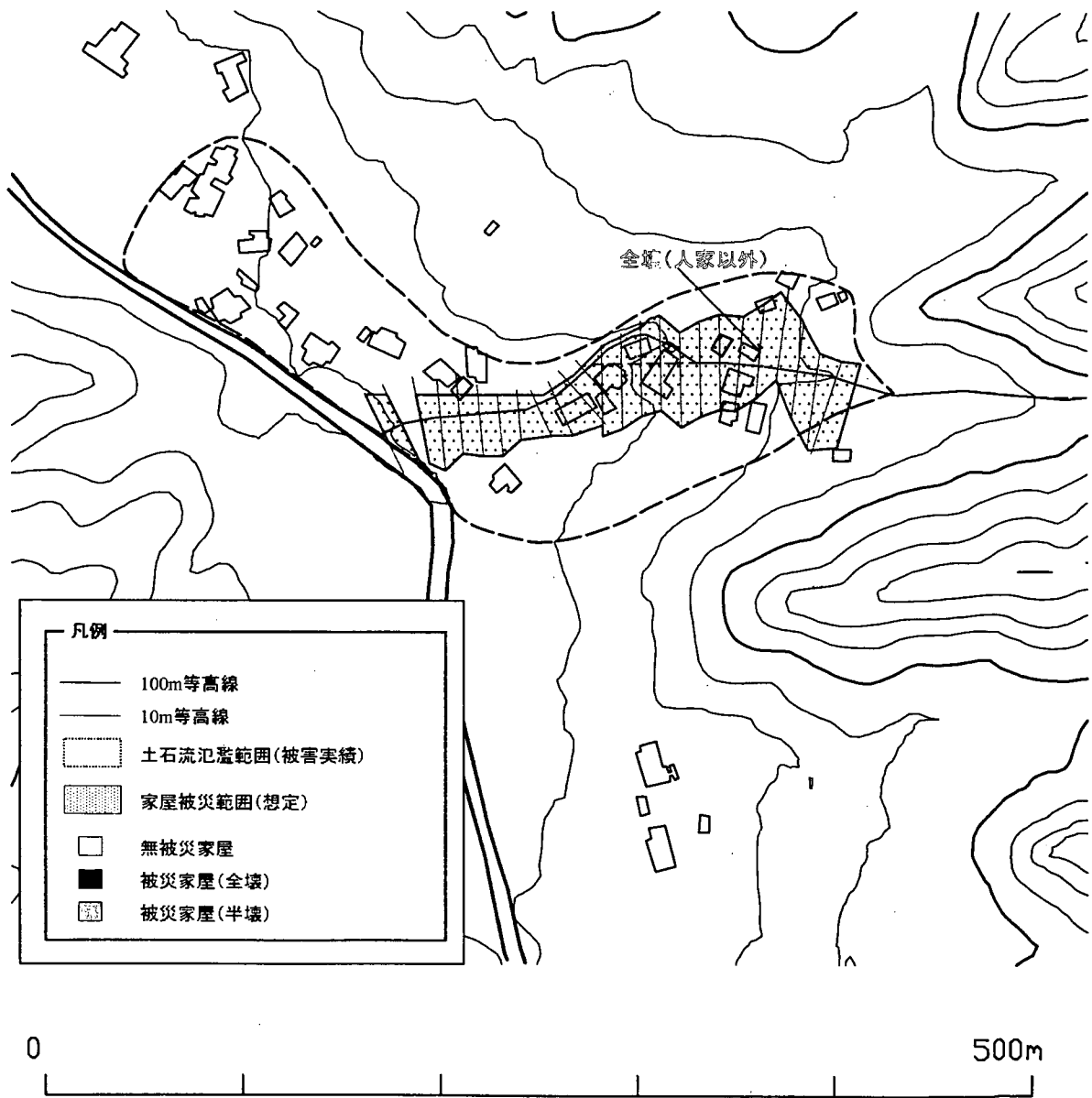


適用ケース① F 溪流 (100m)



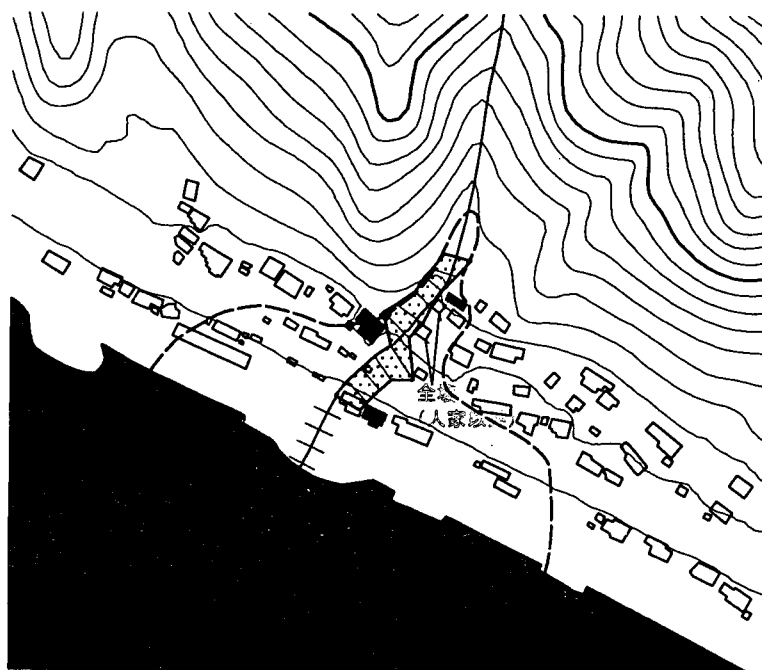
0 500m
 溪流水位(100m)

適用ケース① G 溪流 (100m)

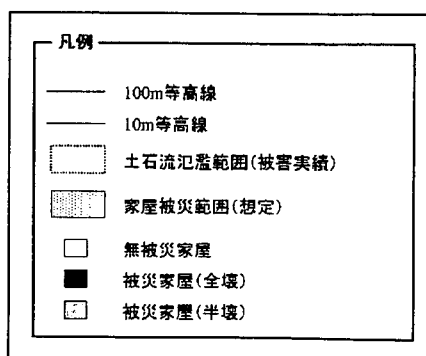


G溪流 適用ケース①(100m)

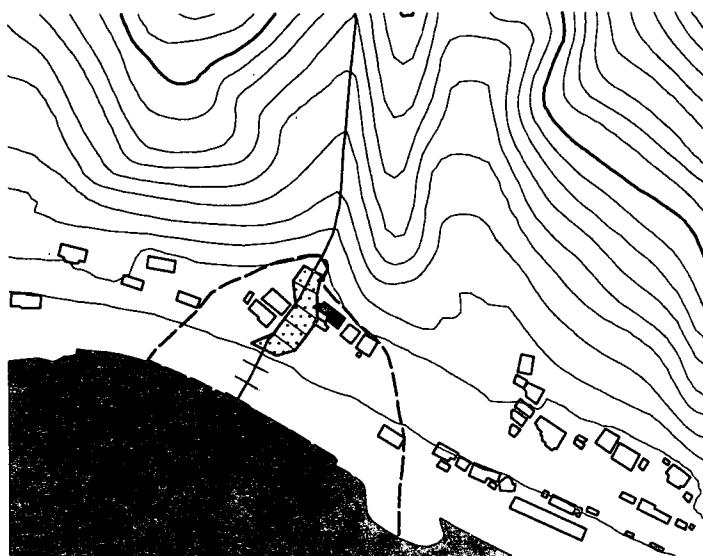
適用ケース① H溪流 (100m)



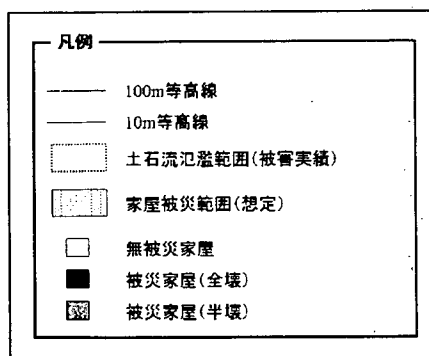
H溪流 適用ケース①(100m)



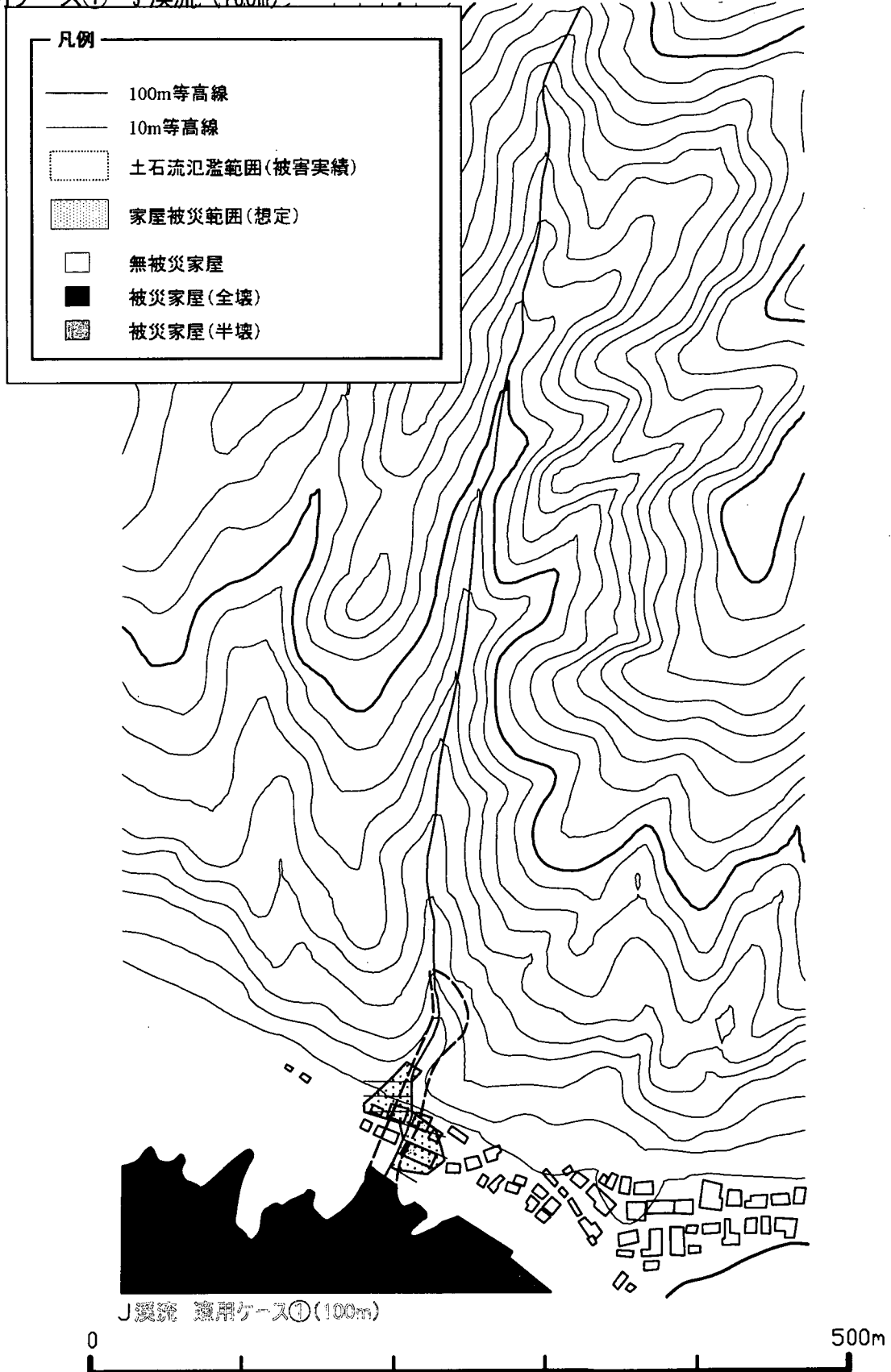
適用ケース① | 溪流 (100m)



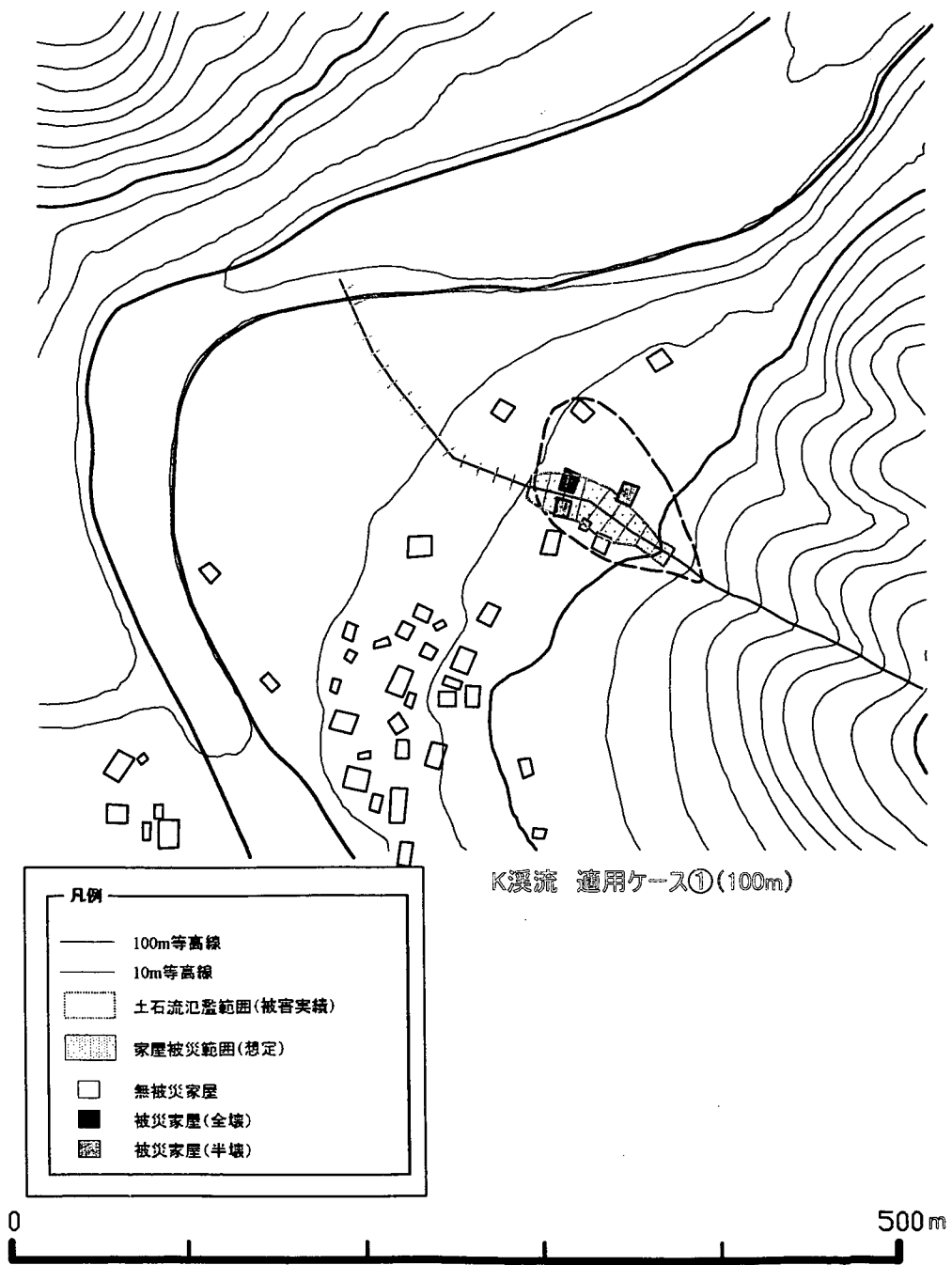
浸水 浸水範囲①(100m)



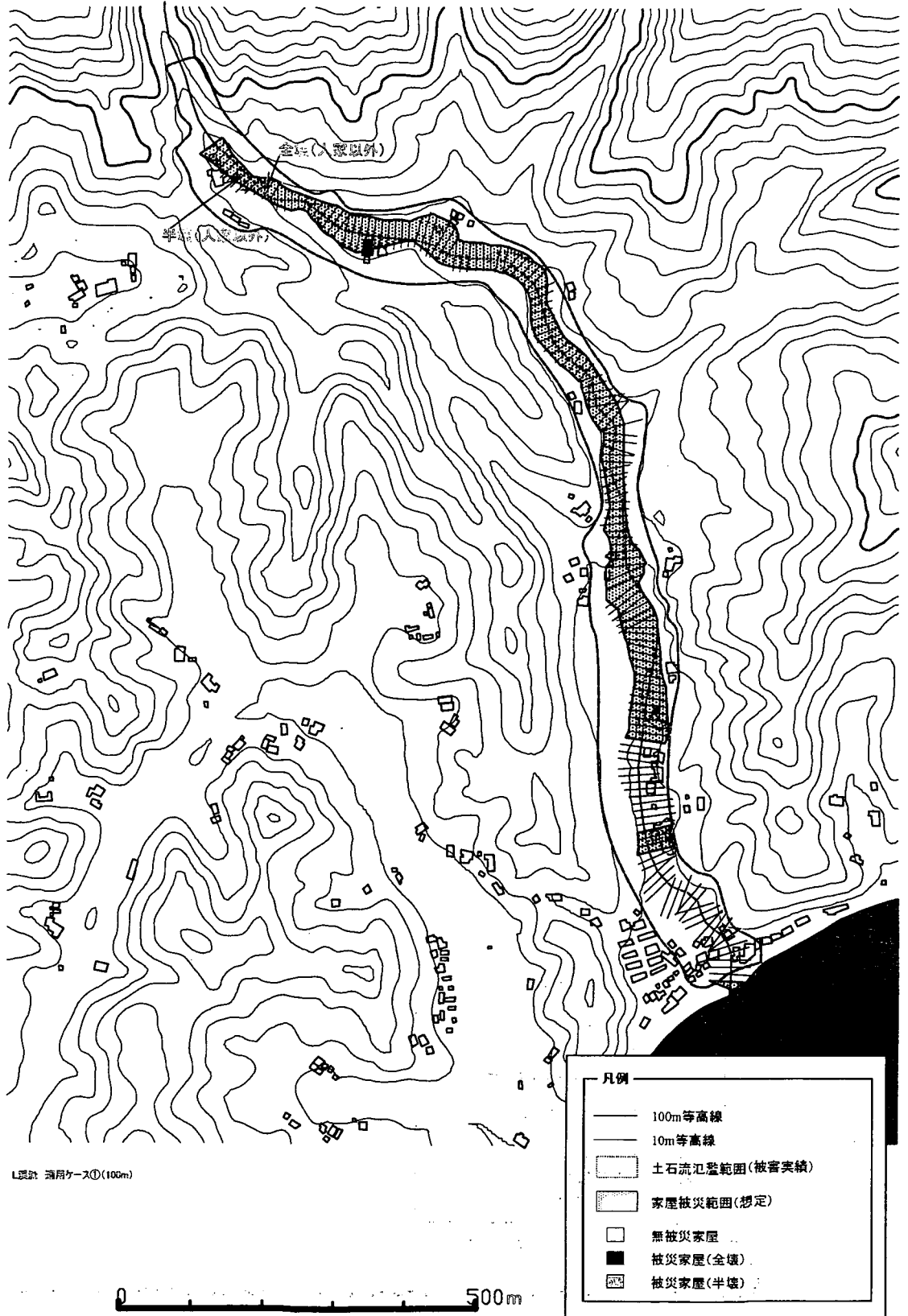
適用ケース① J 溪流 (100m)



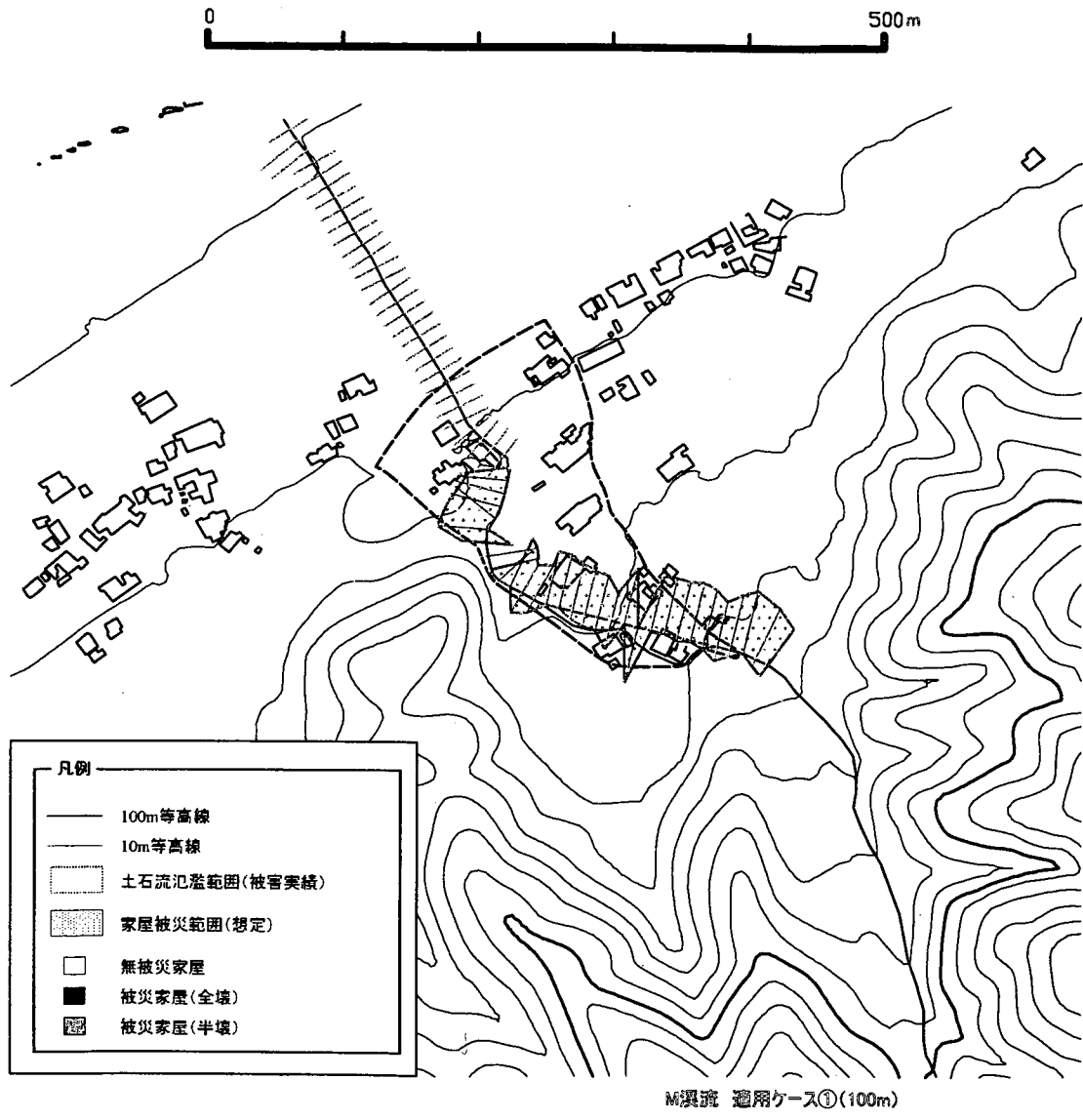
適用ケース① K溪流 (100m)



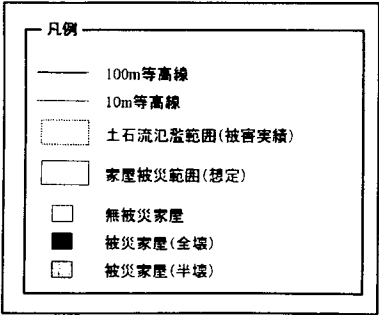
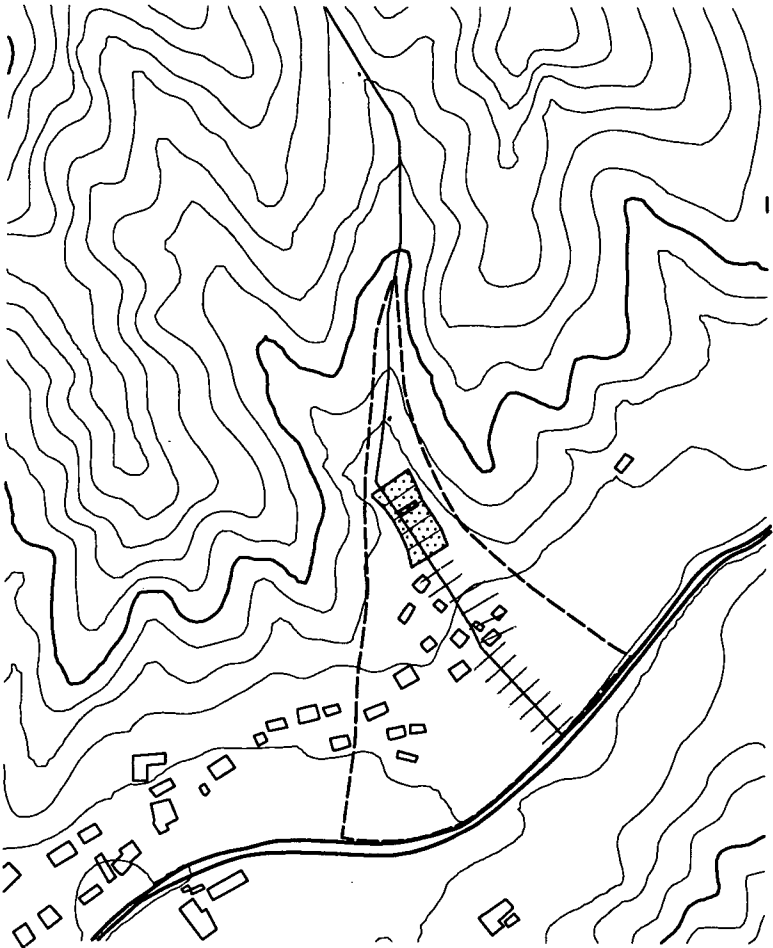
適用ケース① L 溪流 (100m)



適用ケース① M溪流 (100m)



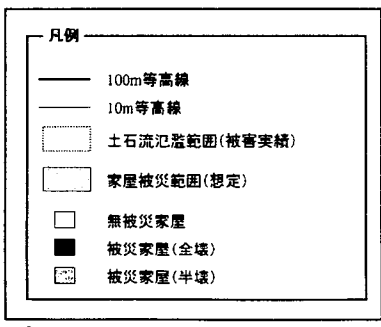
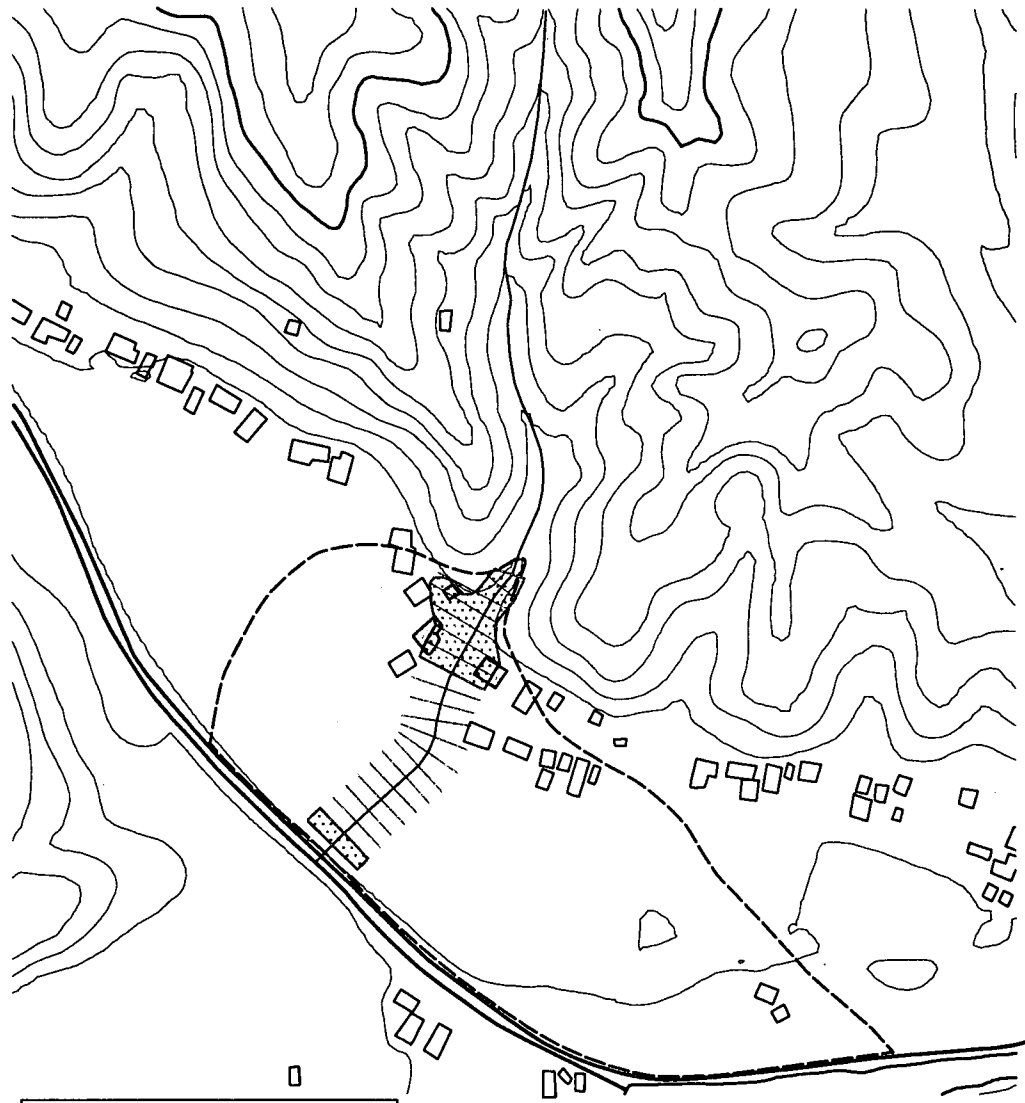
適用ケース① N 溪流 (100m)



0 100m 200m 300m 400m 500m



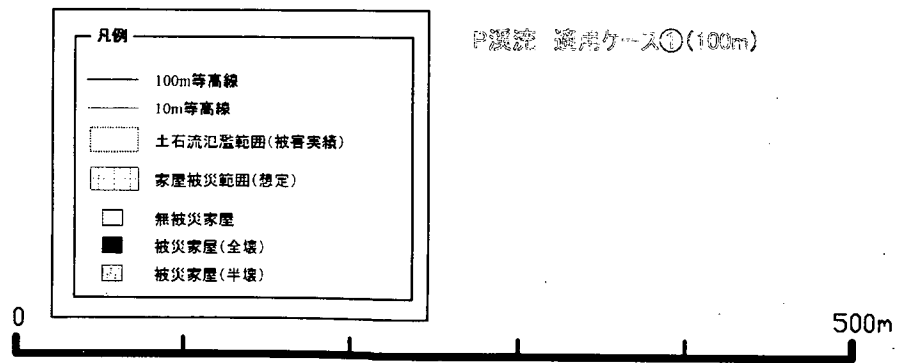
適用ケース① 0 溪流 (100m)



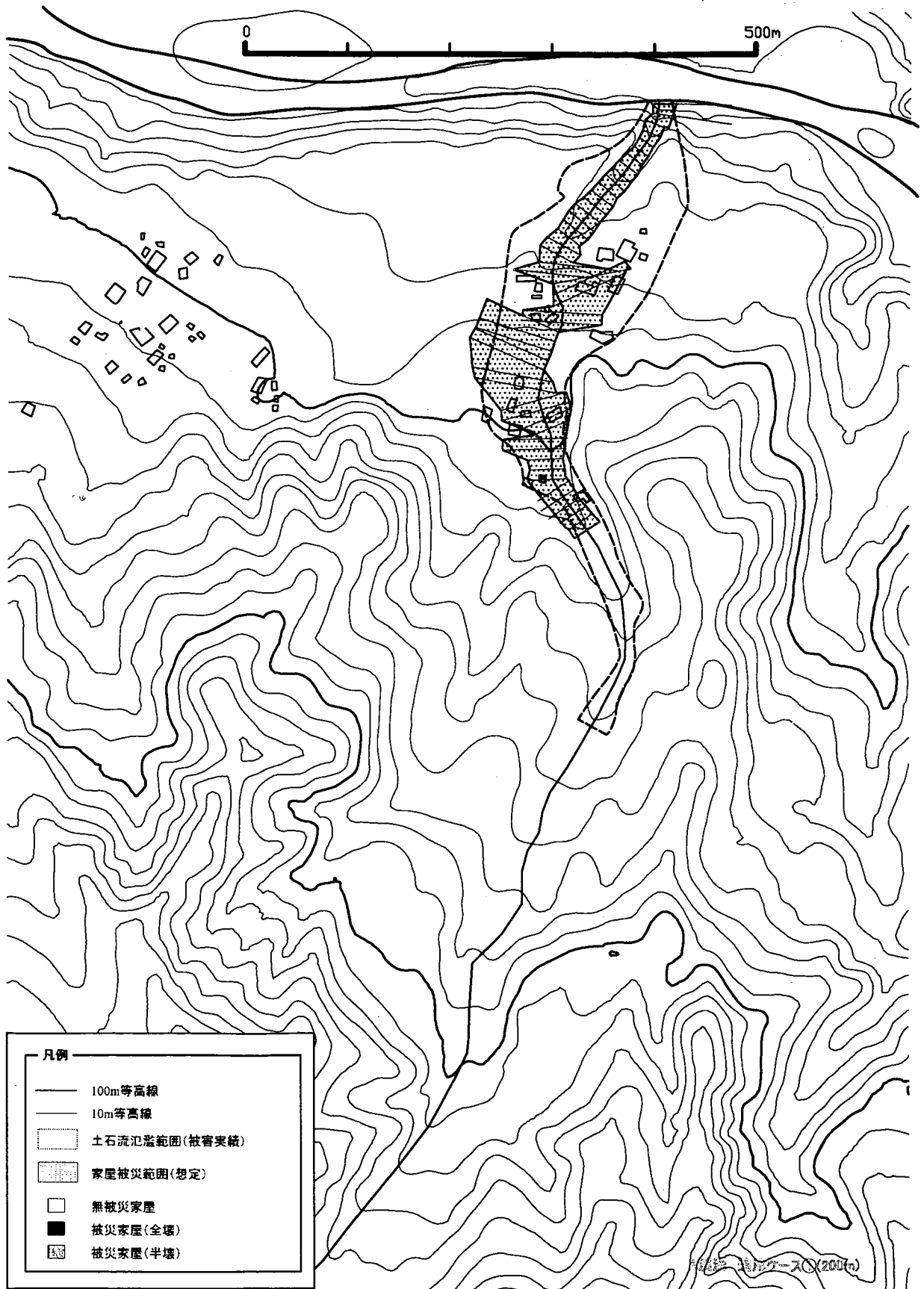
0 溪流 氾濫力 100m



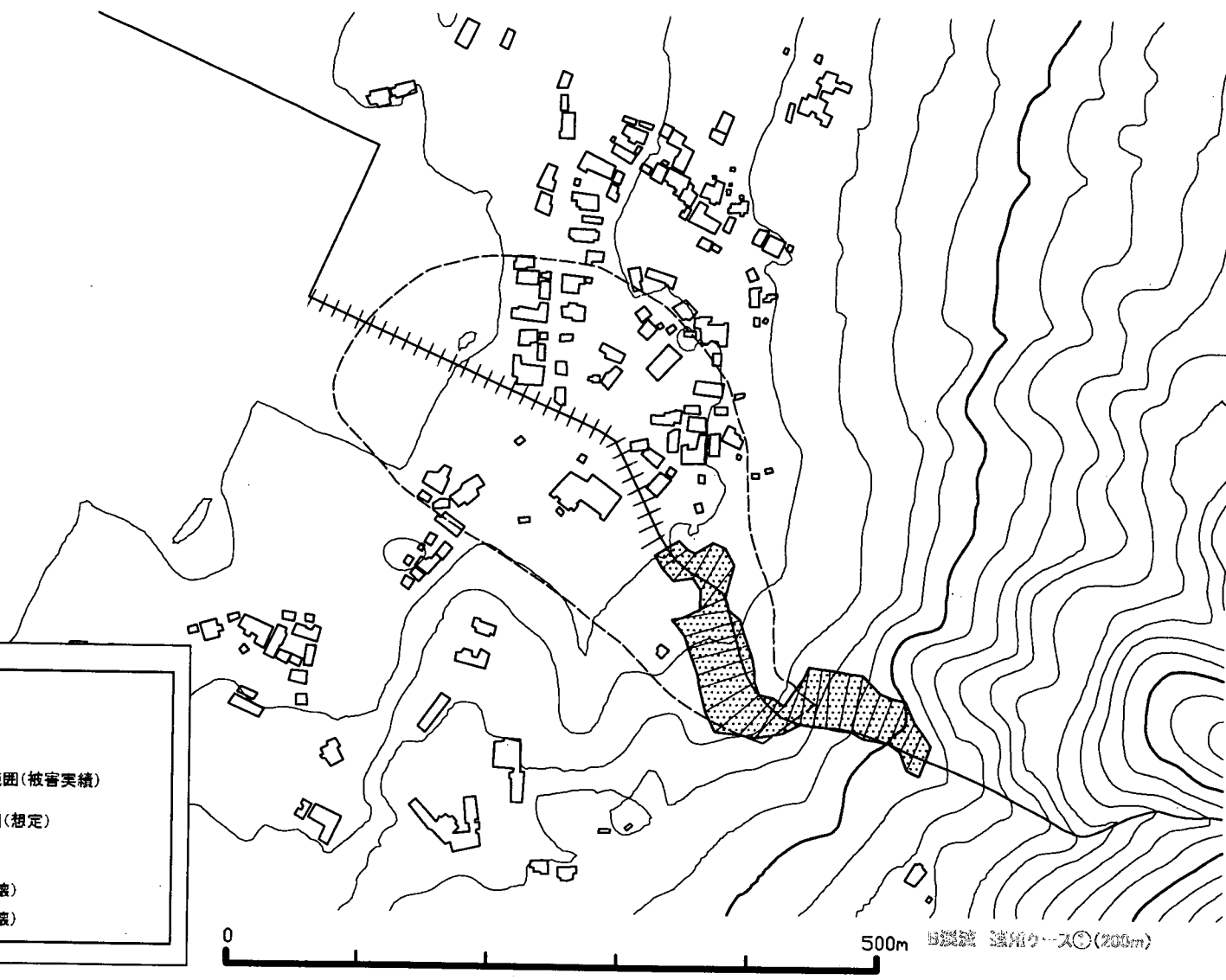
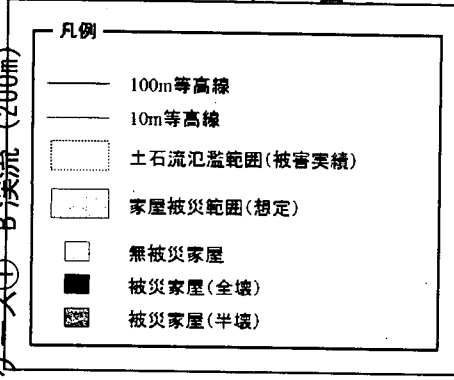
適用ケース① P 溪流 (100m)



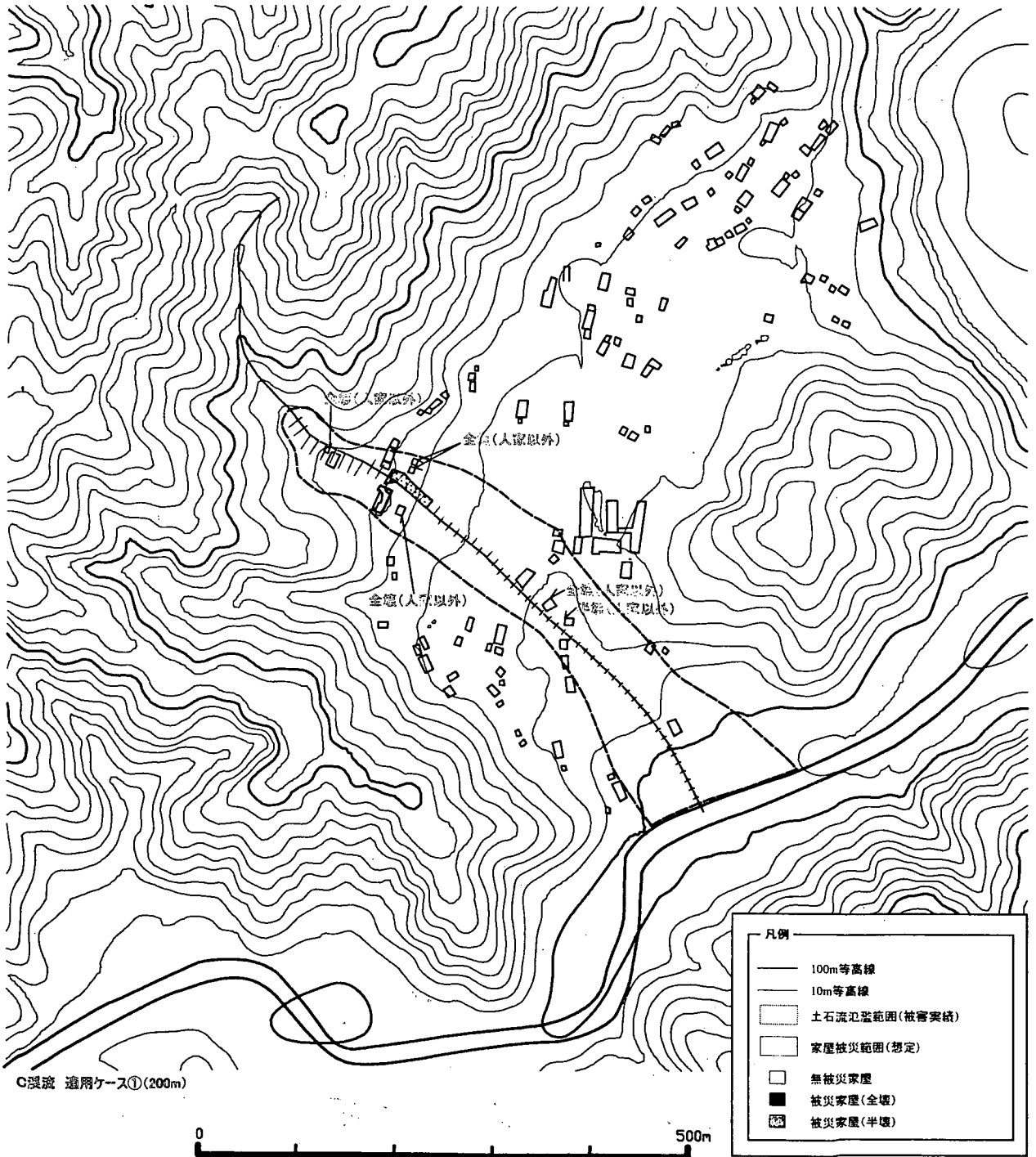
適用ケース① A渓流 (200m)



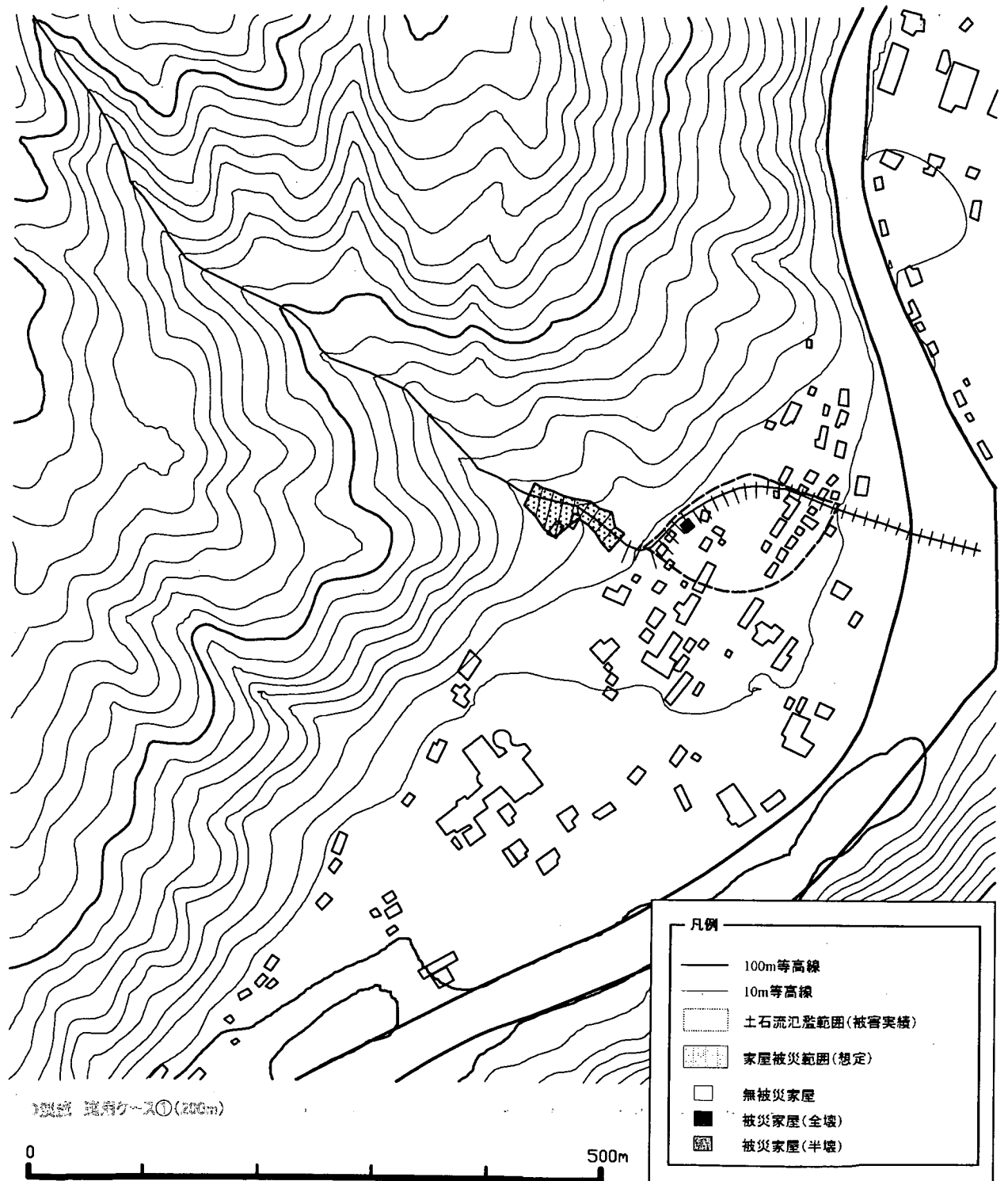
適用件ノ①B溪流(200m)



適用ケース① C 溪流 (200m)

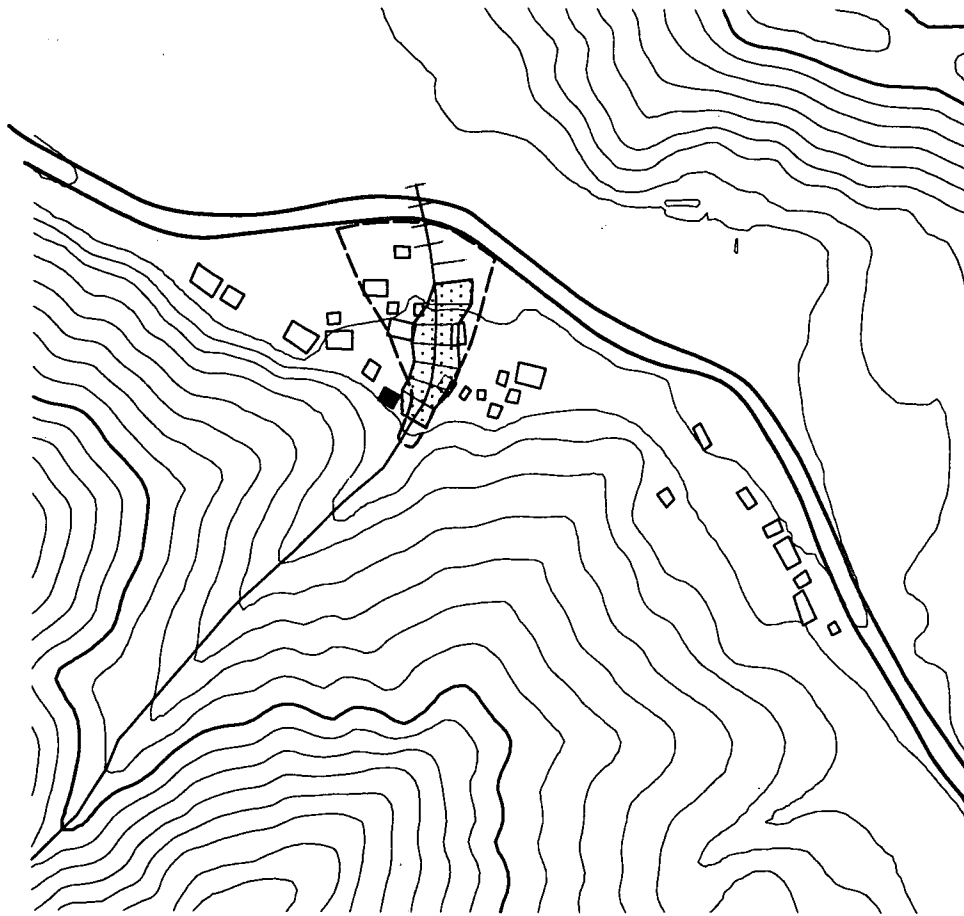


適用ケース① D 溪流 (200m)

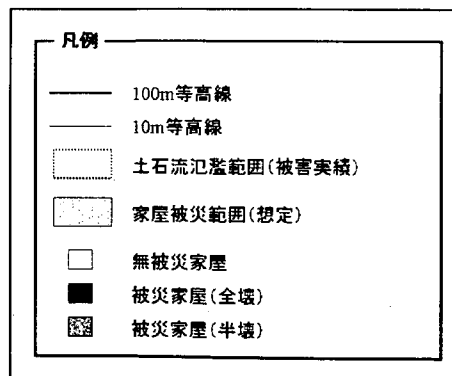


0 500m

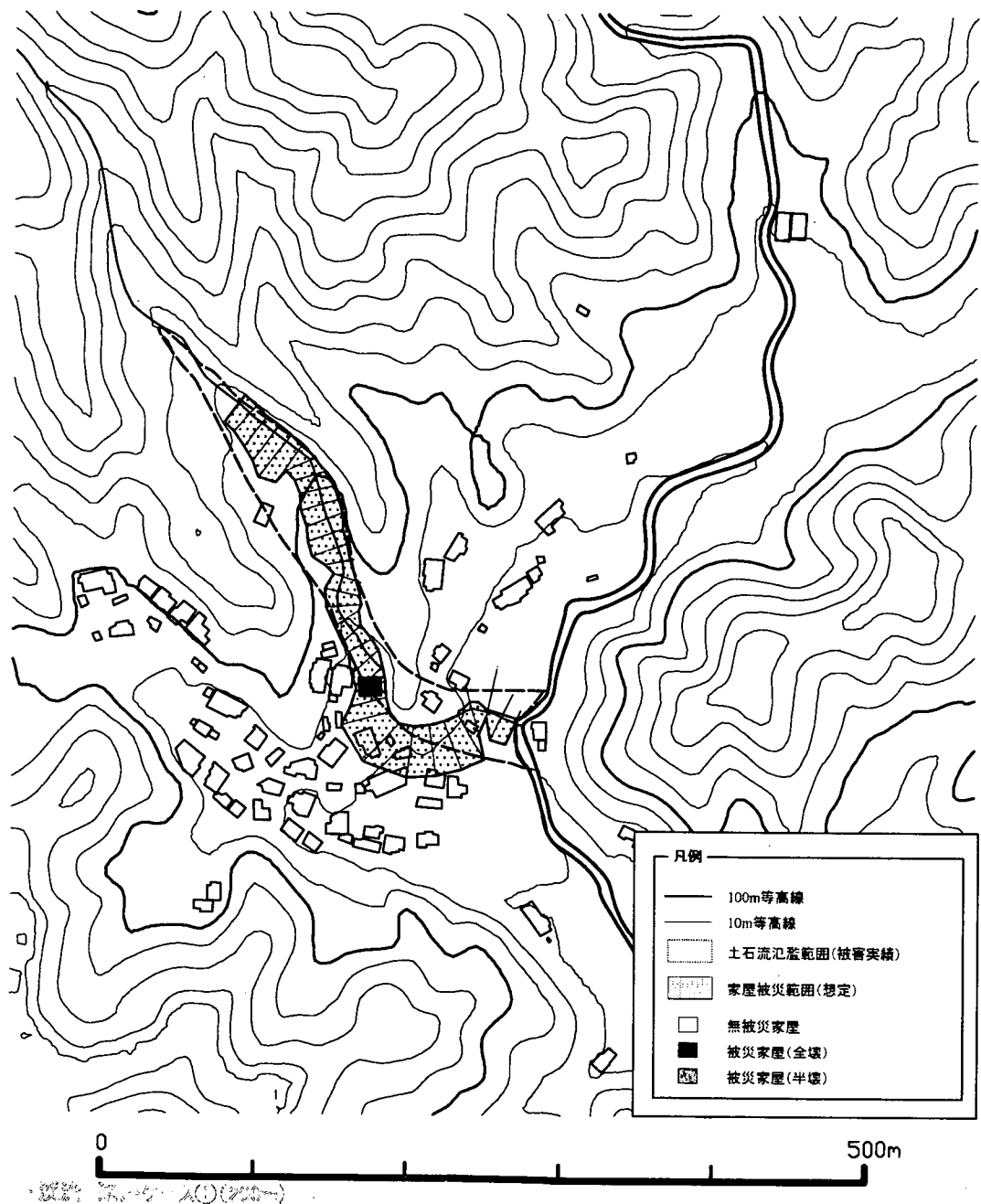
適用ケース① E 溪流 (200m)



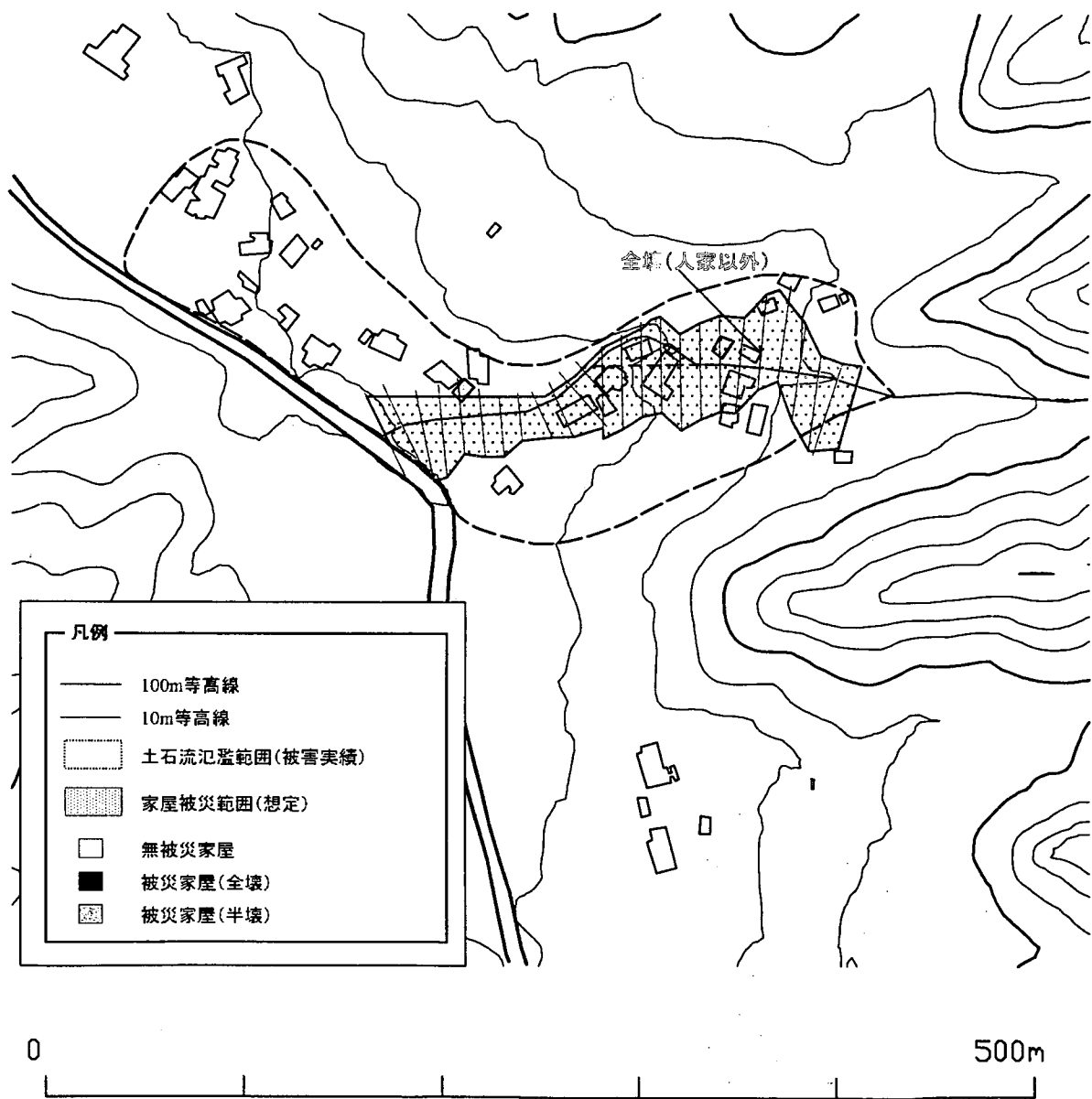
E 溪流 適用ケース① (200m)



適用ケース① F 溪流 (200m)

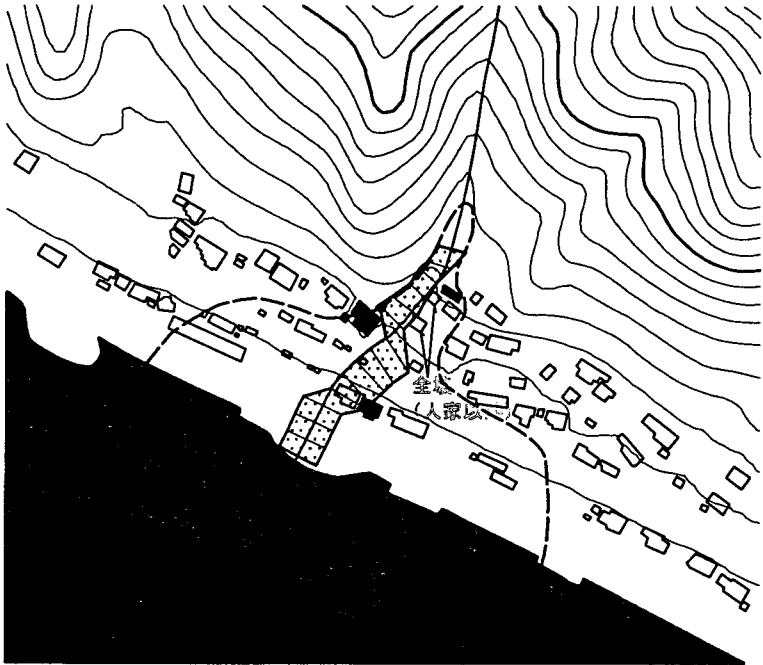


適用ケース① G 溪流 (200m)

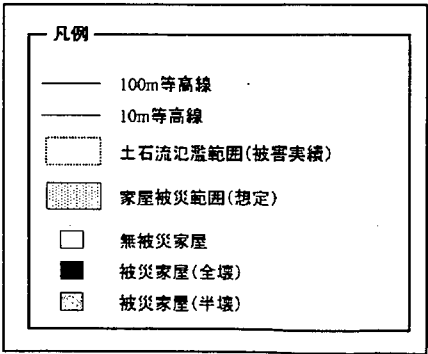


G溪流 適用ケース①(200m)

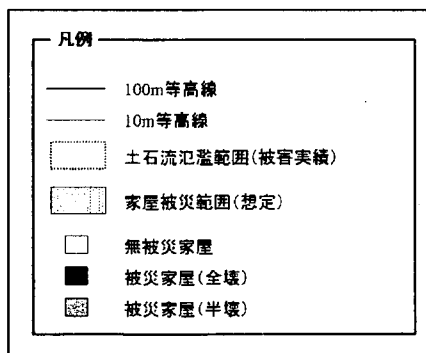
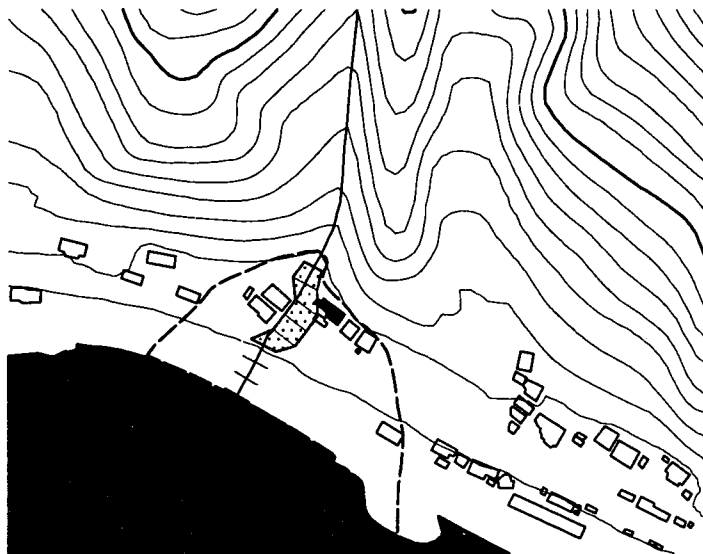
適用ケース① H溪流 (200m)



H溪流 適用ケース①(200m)



適用ケース① | 溪流 (200m)



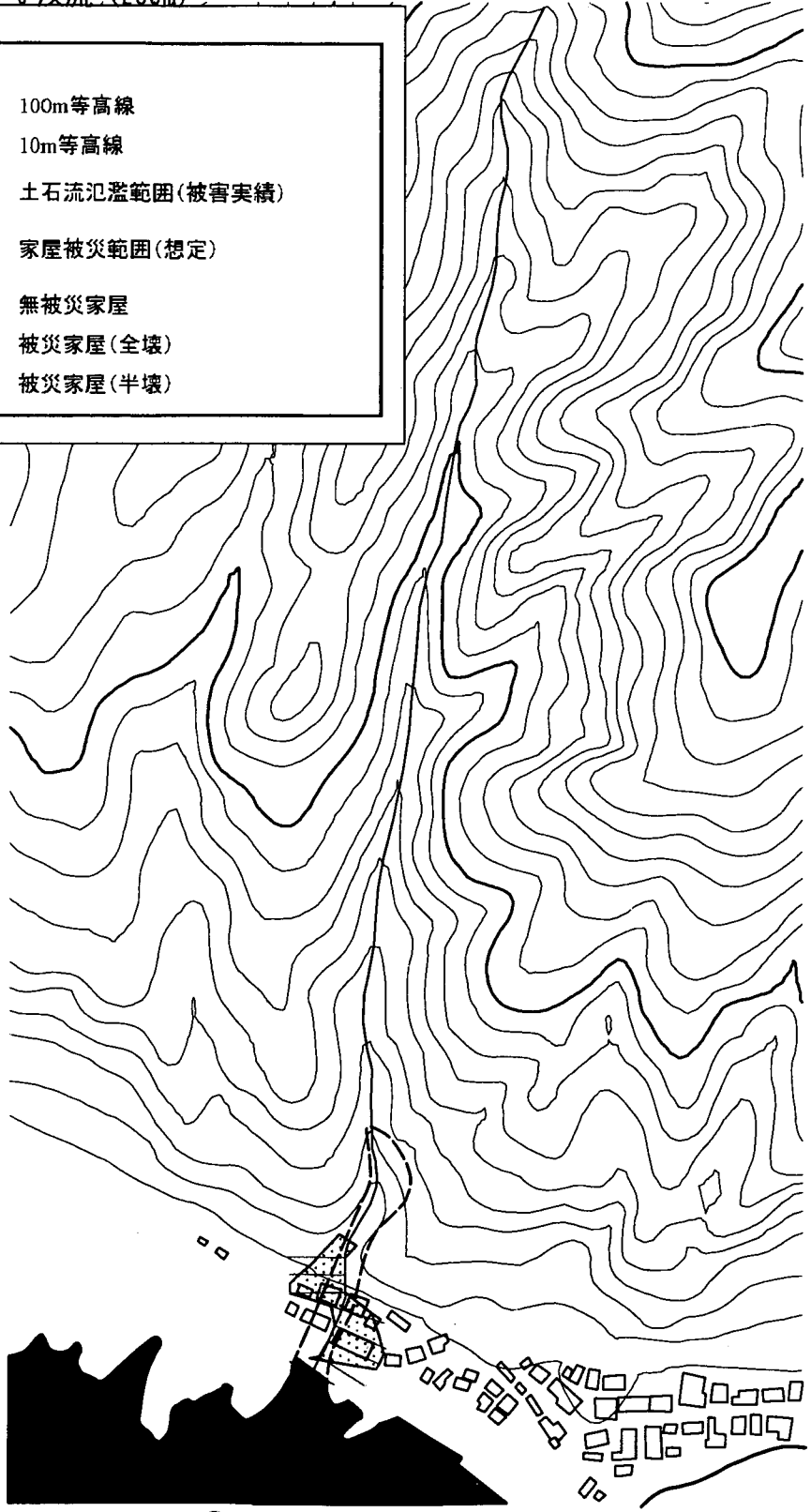
溪流 適用ケース①(200m)



適用ケース① J 溪流 (200m)

凡例

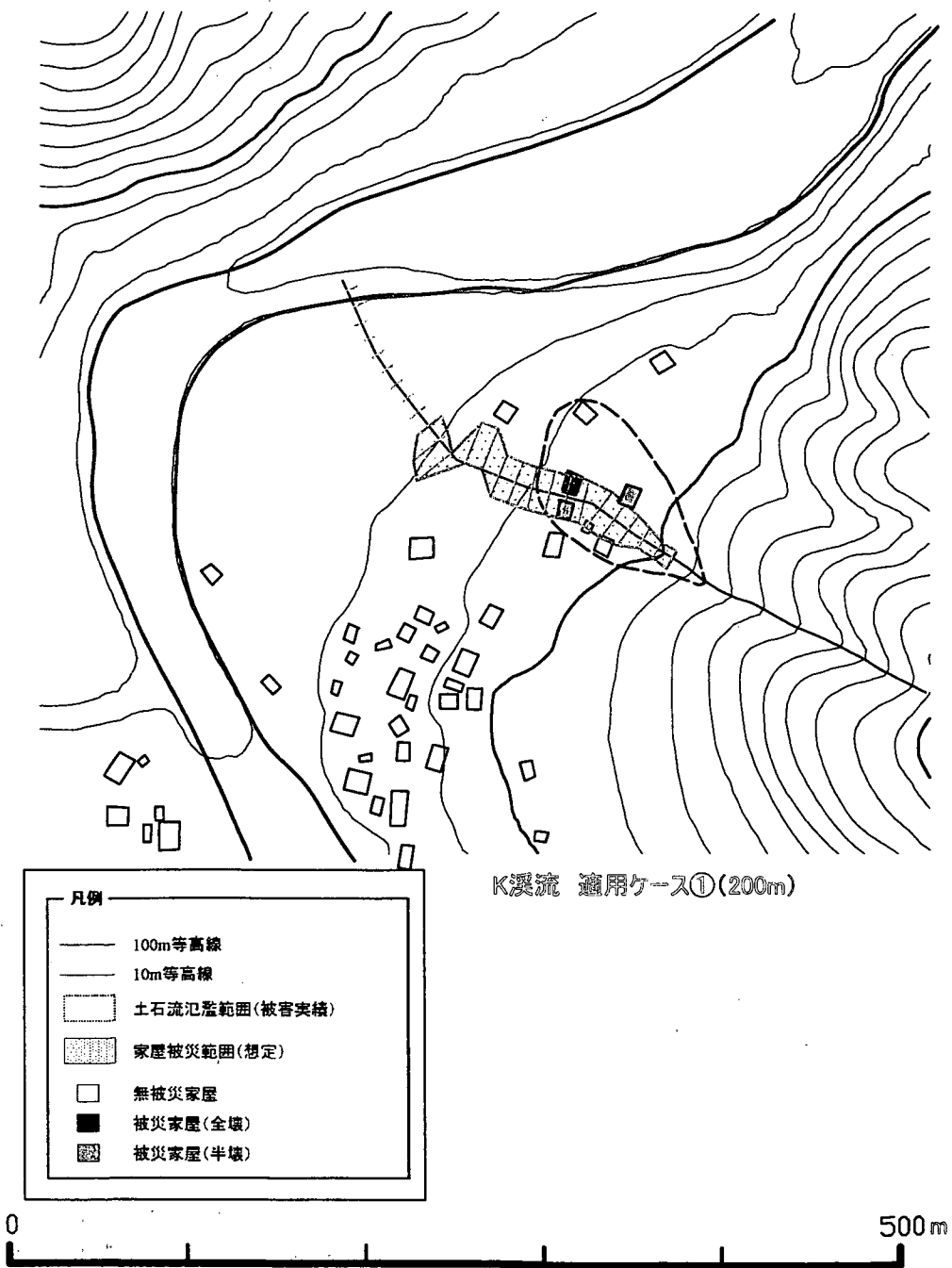
- 100m等高線
- 10m等高線
- ⋯⋯ 土石流氾濫範囲(被害実績)
- ▨ 家屋被災範囲(想定)
- 無被災家屋
- 被災家屋(全壊)
- ▩ 被災家屋(半壊)



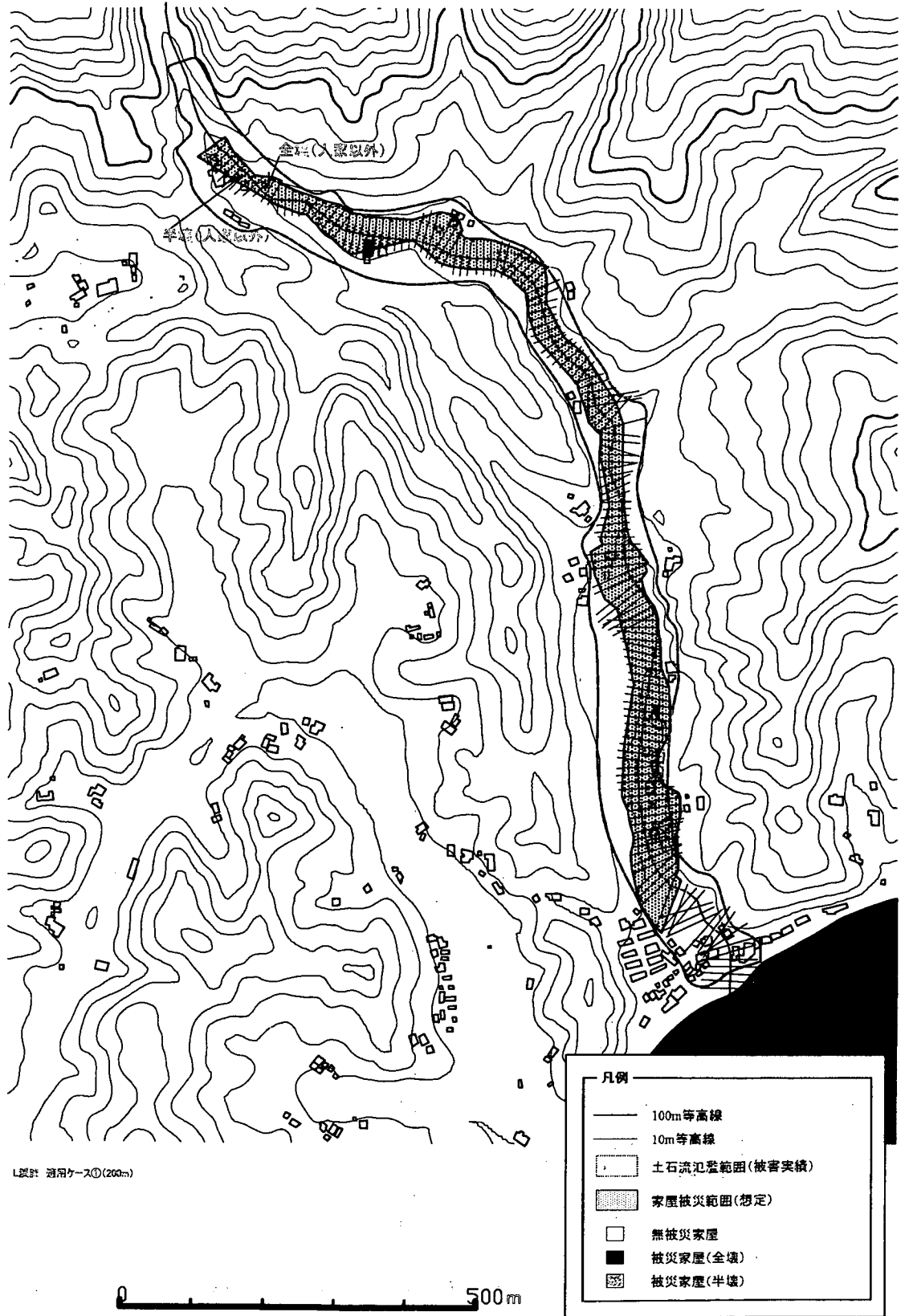
J 溪流 適用ケース①(200m)



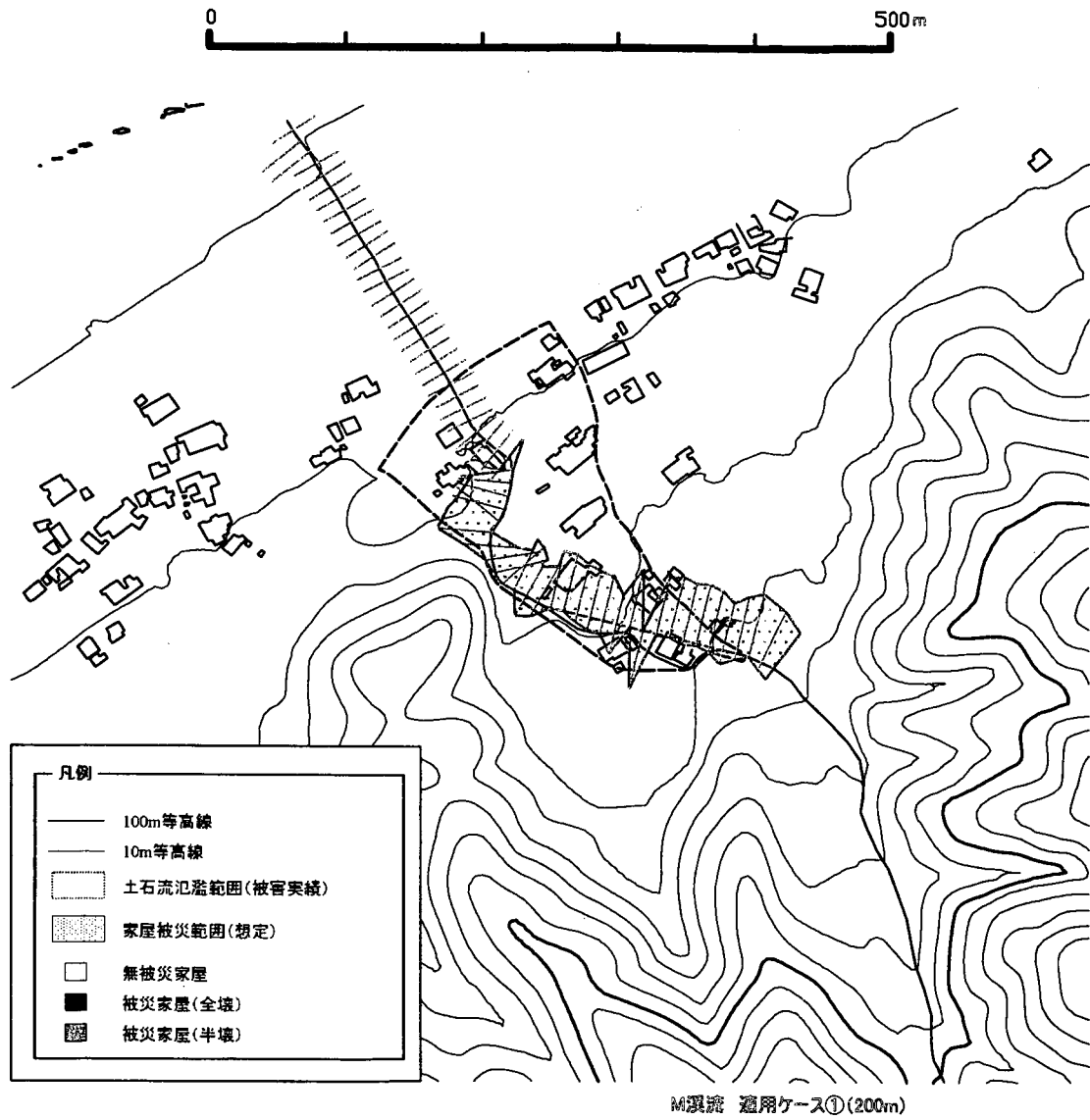
適用ケース① K 溪流 (200m)



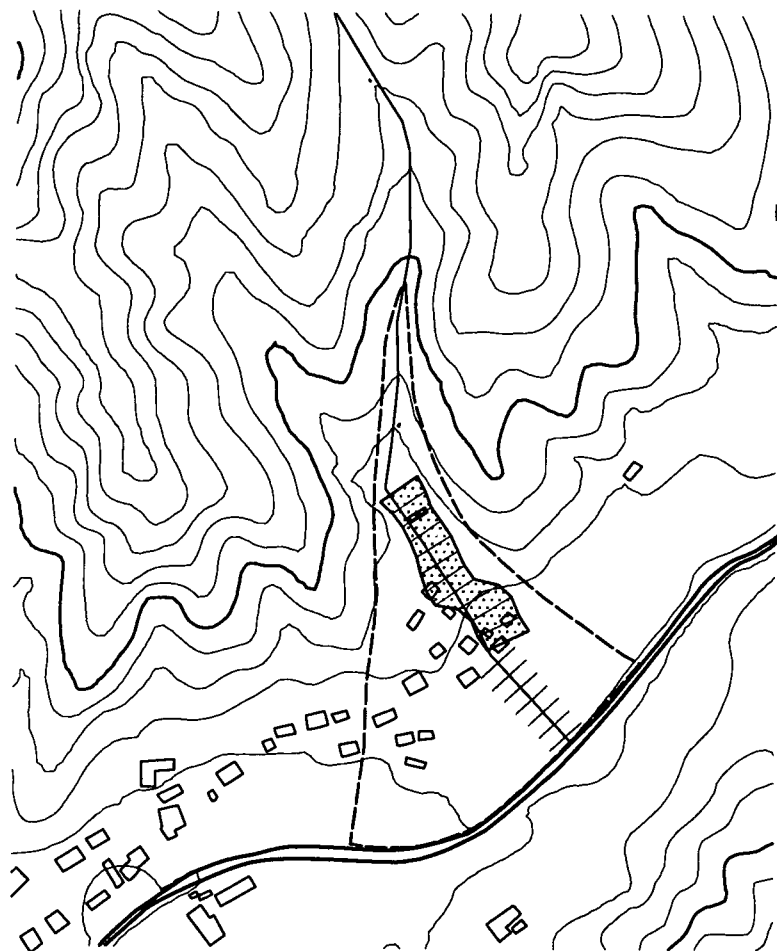
適用ケース① L 溪流 (200m)



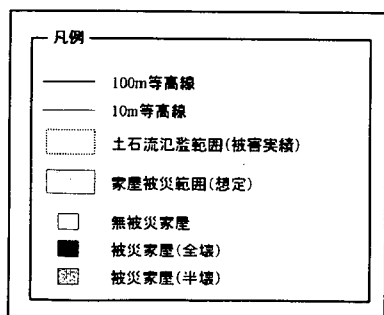
適用ケース① M溪流 (200m)



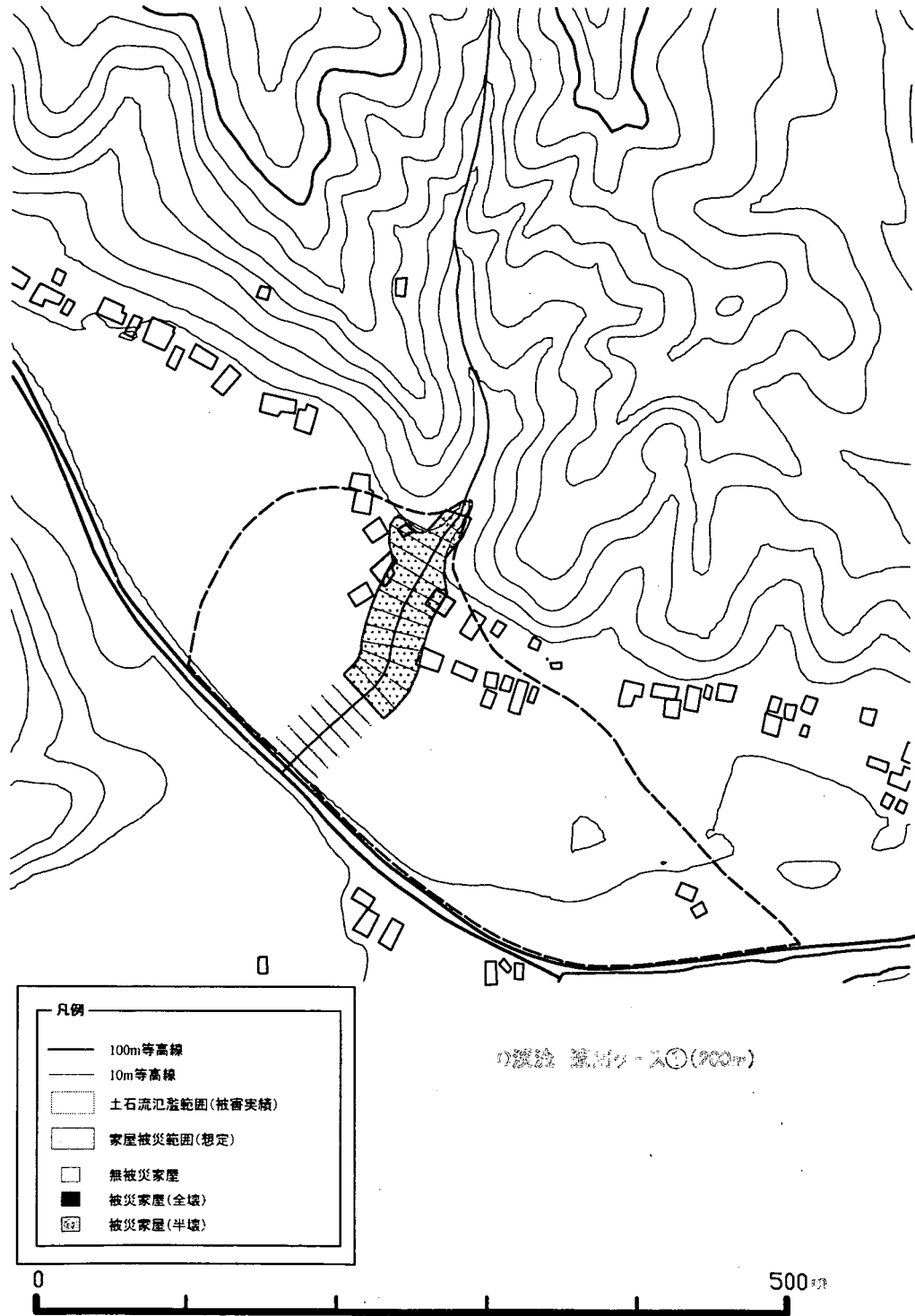
適用ケース① N溪流 (200m)



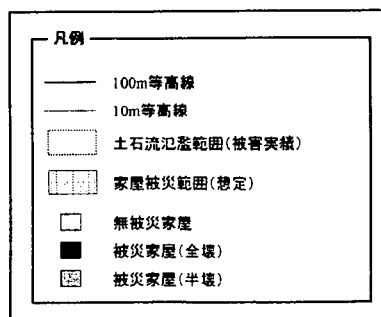
N溪流 適用ケース①(200m)



適用ケース① 〇溪流 (200m)



適用ケース① P 溪流 (200m)



P 溪流 適用ケース①(200m)

