

Research on the effects of public works projects on city planning and community development from the viewpoint of landscape

ABE Takahiro (Dr. (Eng.)), Researcher
MATSUE Masahiko, Head

Environment Department, Landscape and Ecology Division

(Key words) Public works project, landscape, effects, city planning, community development, classification, guideline

1. Background/purpose of the research

The Ministry of Land, Infrastructure, Transport and Tourism has expanded landscape policies in public works projects since it promulgated the Beautiful Country Creation Policy in 2003. And city planners are more strongly demanding the creation of landscapes by public works projects, which effect regional landscape and city planning.

But under past landscape policies, sufficient knowledge was not accumulated to answer the question; “Through what kinds of initiatives and processes, are the effects on city planning and community development of landscape creation by public works projects made manifest?”, and it would be difficult to state that the information which public works project leaders can apply has been established.

Under such background circumstances, research concerning the effects on city planning and community development of landscape creation by public works projects is being undertaken to prepare the guideline, a compilation of knowledge and information to be applied to create landscapes with impact on city planning and community development, for field technologists executing public works.

This research classifies the effects on local city planning and community development of landscape creation through public works projects based on analysis of cases. Based on this, the interrelationships between effects and the relationship between effects and landscape creation methods are analyzed to clarify the effects manifestation process. The guideline will be prepared based on the results of these analyses.

This report describes the classification of the landscape creation effects prepared based on past analysis.

2. Classification of landscape creation effects

In order to clarify the effects on local city planning and community development of landscape creation by public works projects, 13 landscape creation projects were analyzed to clarify 30 landscape creation effects.

These landscape creation effects are classified by, as shown in Figure 1, focusing on “way effects are manifested” (axis of abscissas) and “cause of manifestation of effects” (axis of ordinate), setting four items “social capital”, “environment”, “economy”, and “recognition”, and setting three detailed items, “setting project framework”, “project implementation method”, and “achievements of project”.

3. The future

Based on such a classification of effects, the interrelationships between effects and the landscape creation methods which contribute to the manifestation of effects will be analyzed to clarify the effects manifestation process. And based on the results of such analysis, the guideline for use by field technologists implementing public works projects will be prepared.



Photo 1. Examples of Landscape Creation Analyzed

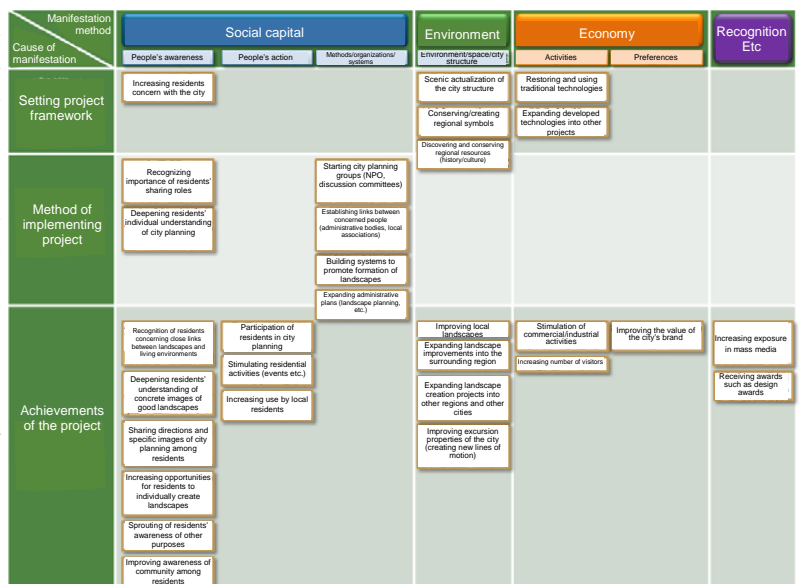


Figure 1. Classification of Effects of Landscape Creation

[Reference]

T. Abe, M. Matsue, H. Fukushima: Research on the effects of public works projects on city planning and community development from the viewpoint of landscape, Collected Research on Landscape and Design of the Japan Society of Civil Engineers, Vol. 7, 2011