

図-2.4.8(a) 連続段差試験軸重変動の周波数特性（走路ケース1 速度40km/h 1回目走行）

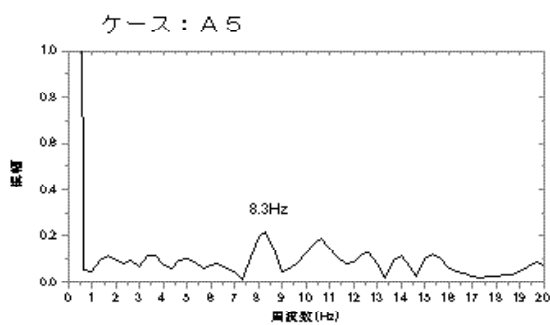
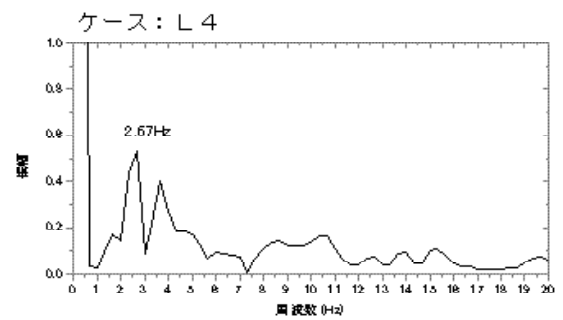
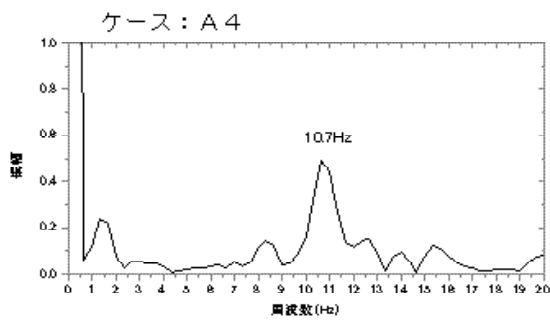
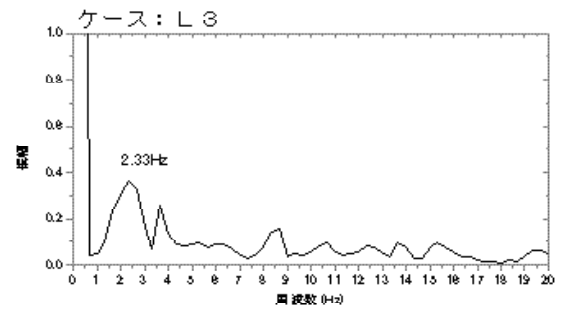
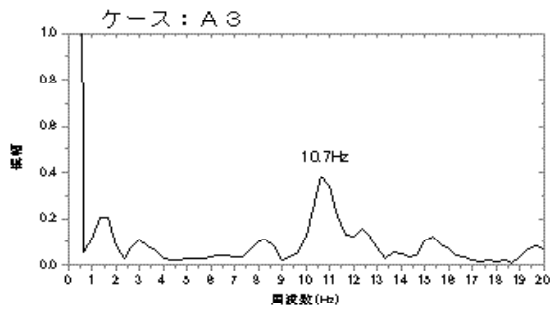
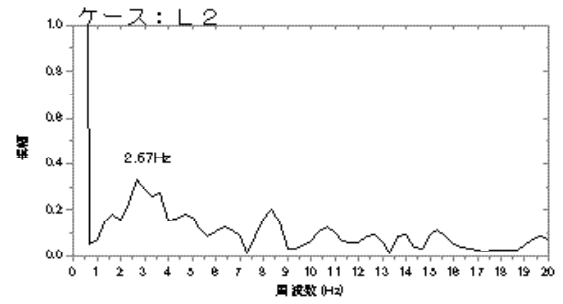
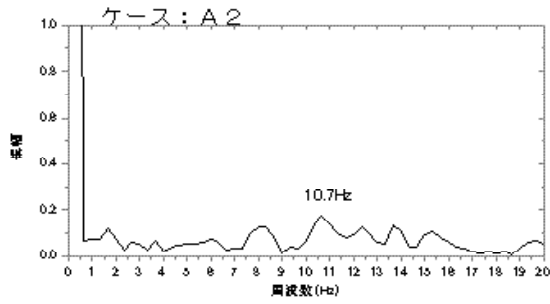
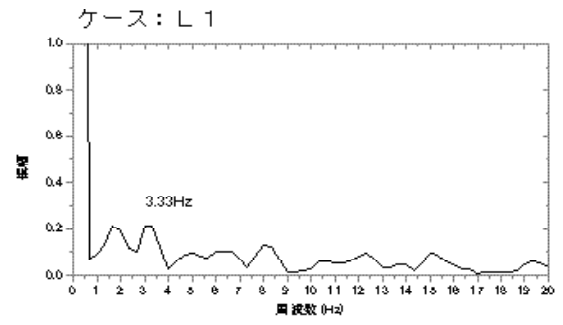
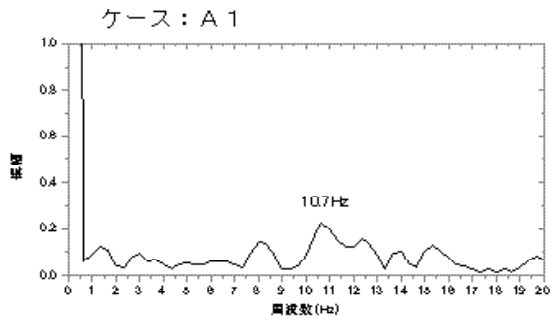


図-2.4.8(b) 連続段差試験軸重変動の周波数特性 (走路ケース1 速度 80km/h 1回目走行)

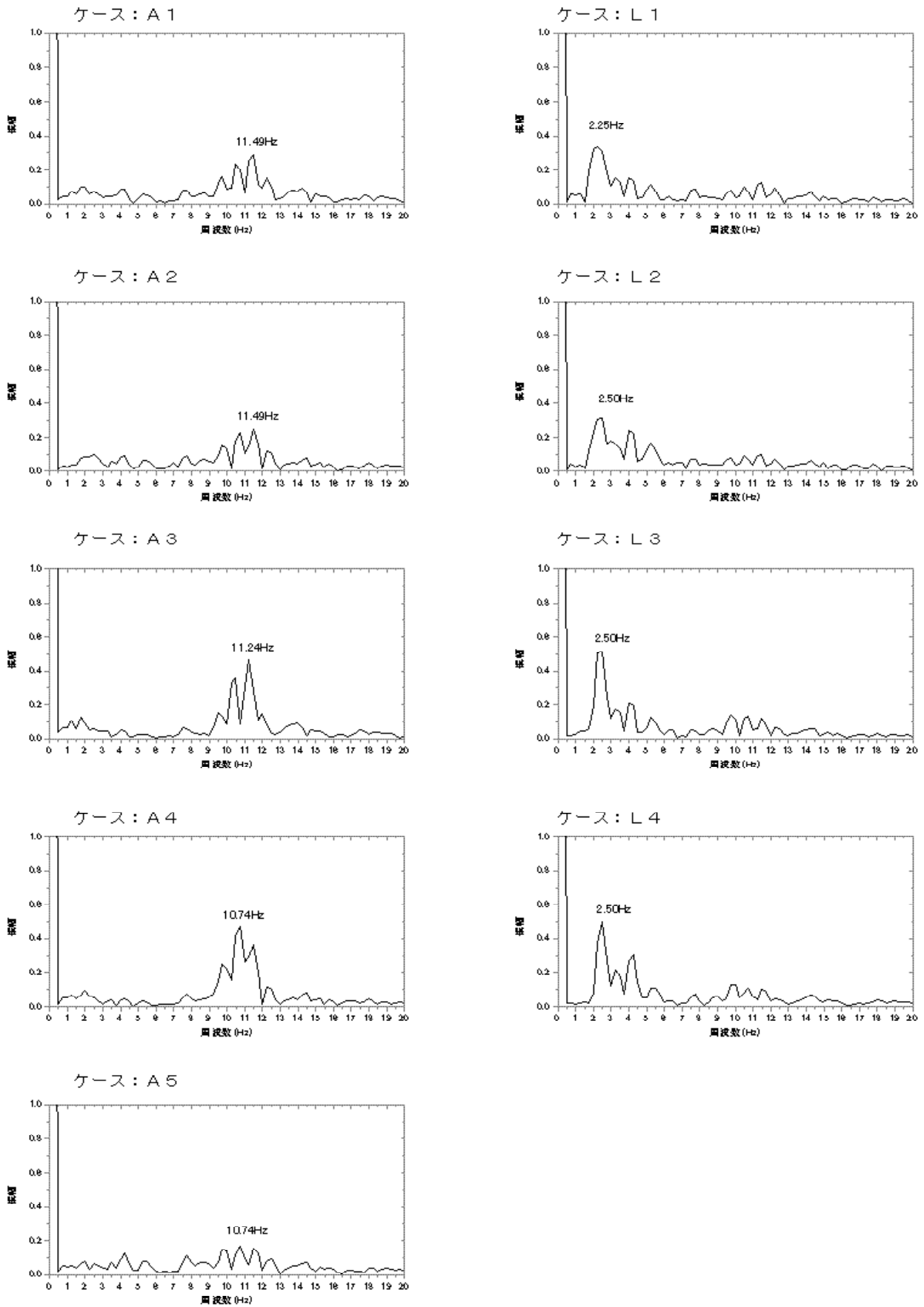


図-2.4.9(a) 連続段差試験軸重変動の周波数特性 (走路ケース2 速度 40km/h 1回目走行)

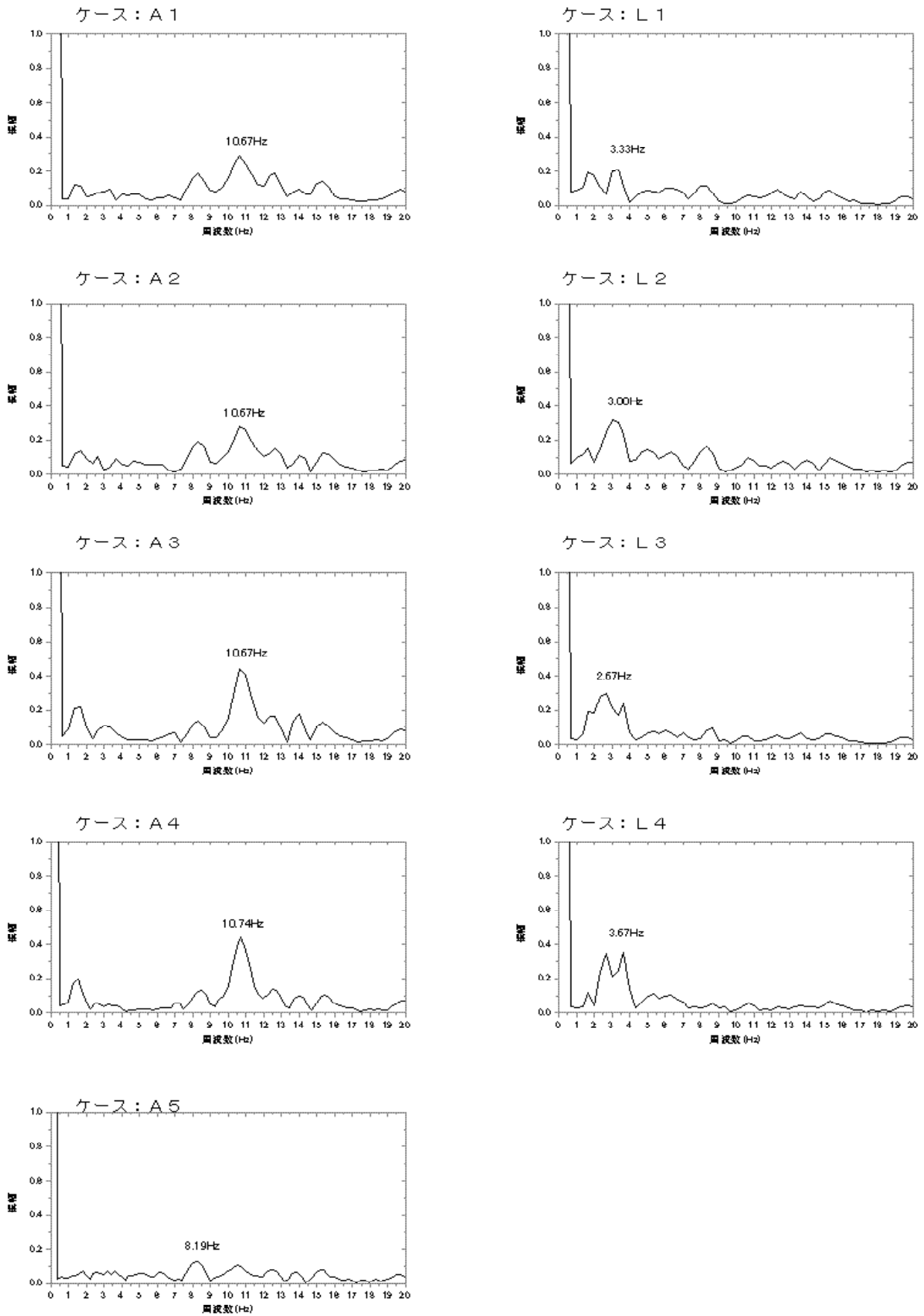


図-2.4.9(b) 連続段差試験軸重変動の周波数特性 (走路ケース2 速度 80km/h 1回目走行)

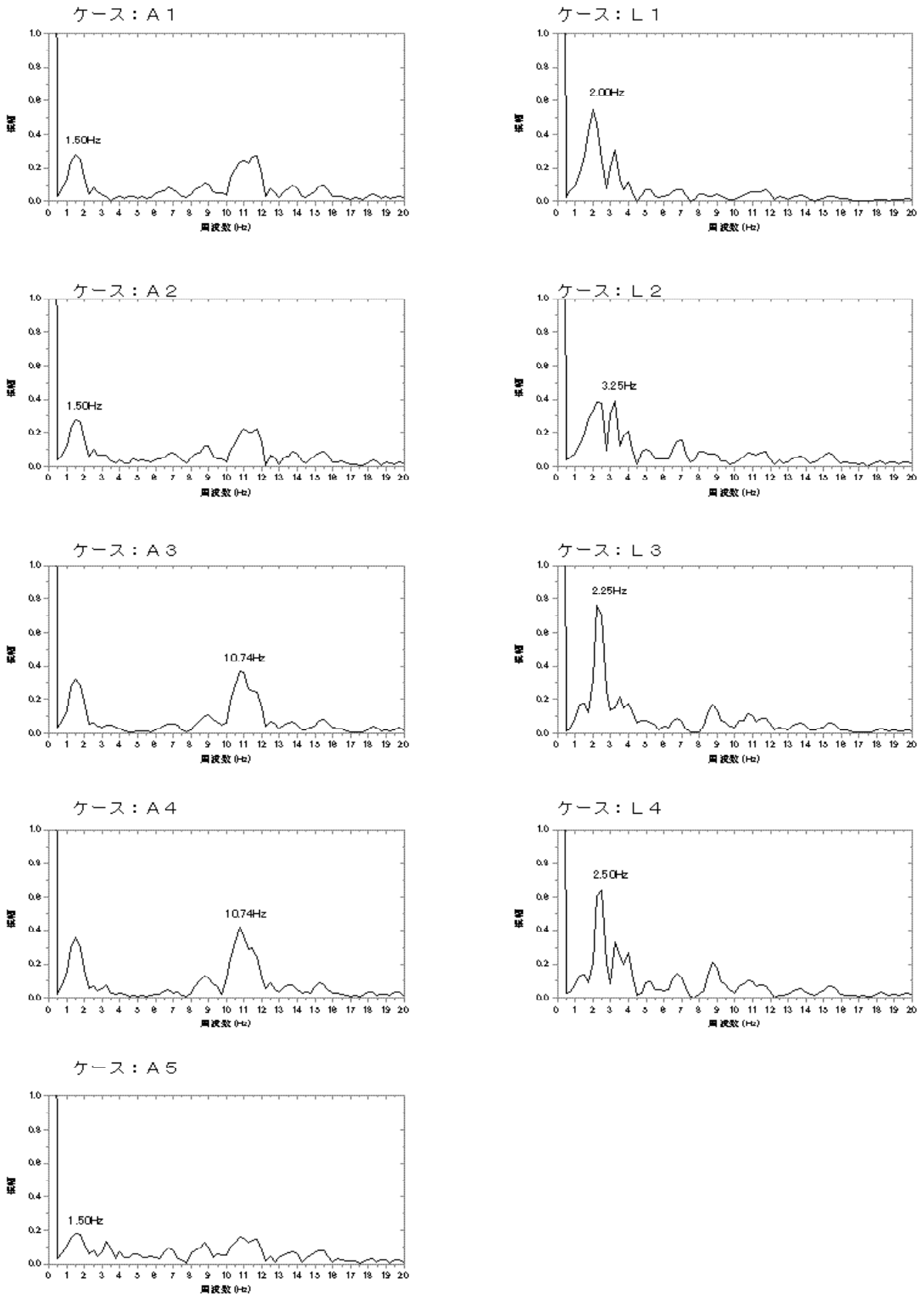


図-2.4.10(a) 連続段差試験軸重変動の周波数特性
 (走路ケース3 [走路②+斜路] 速度 40km/h 1回目走行)

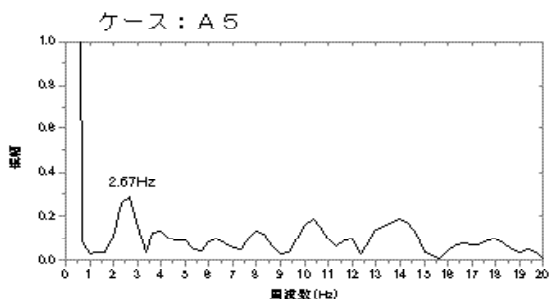
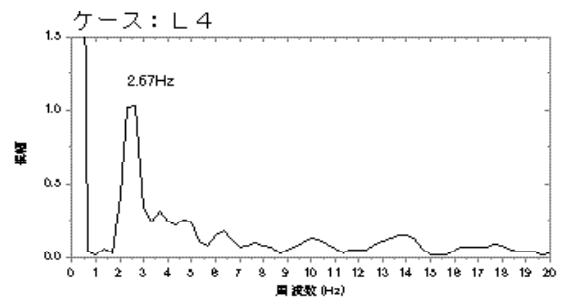
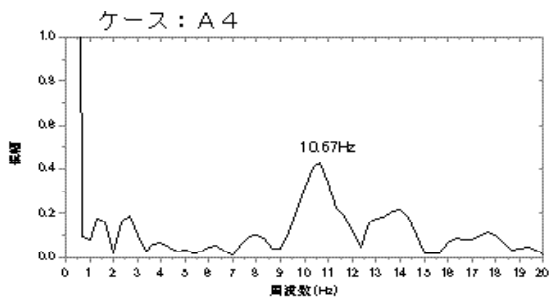
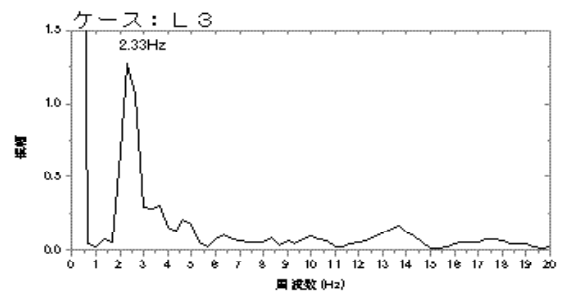
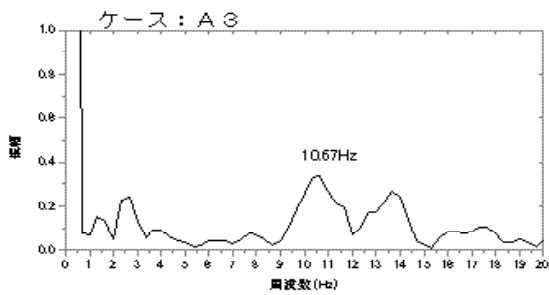
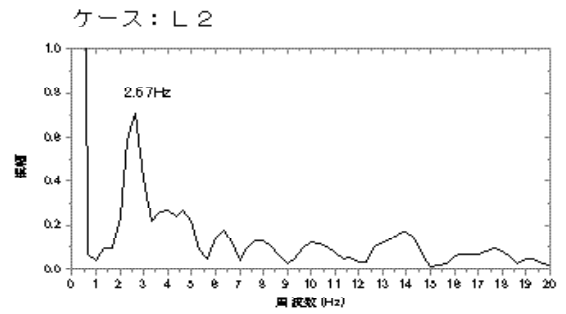
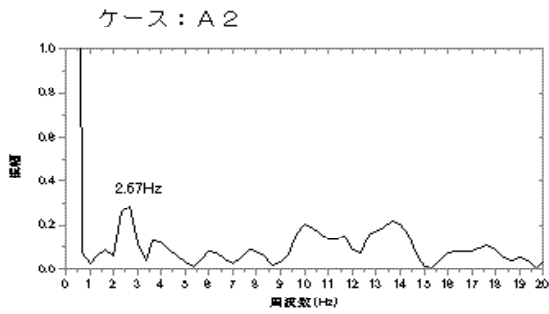
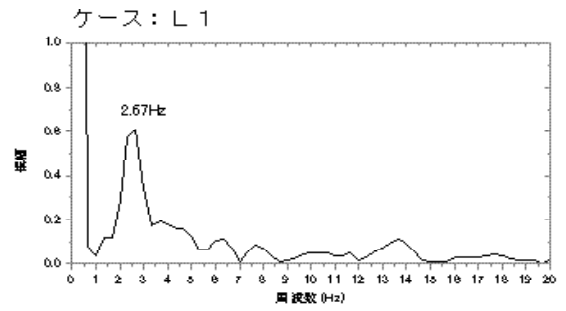
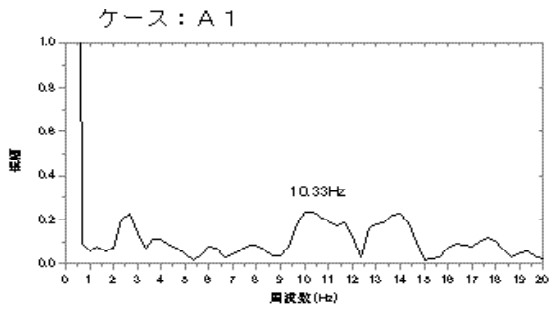


図-2.4.10(b) 連続段差試験軸重変動の周波数特性
(走路ケース3 [走路②+斜路] 速度 80km/h 1回目走行)