

Maintenance of Road Environment and Space by the Collaboration with Communities

Period of research: fiscal 2017 to 2018

INOUE Ryuji, Head

OSHIRO Nodoka, Senior Researcher

TAKIMOTO Masamichi, Researcher

OGURI Hitomi, Senior Researcher

NAGAHAMA Yosuke, Researcher

Road Environment Division, Road Traffic Department

Keywords: collaboration with community, road environment, use of space, maintenance and management

1. Introduction

In order to create a good road environment, it is necessary to provide long-term, continuous, and appropriate maintenance of the road environment and attract people by promoting the use of road space. To promote these activities, collaboration and liaison with the community and residents are essential. We at the Road Environment Division discussed a method to promote the maintenance of the road environment and the use of road space effectively and efficiently through a public-private partnership, and we are going to compile guidelines that can be effectively used in these activities by the parties concerned, including road administrators, communities, and residents.

2. Examination of the Realization of Effective Road Environmental Conservation

As administrative services are becoming diversified and complicated, it is difficult for road administrators to assume the responsibility for all road environment maintenance projects. For this reason, it is necessary to investigate measures to maintain the environment of roads, which are the common property of a community, through collaboration with the community and residents (road cooperative body system (Photo 1)*¹ and volunteer support programs), depending on the details of the maintenance project and the circumstances of the community. The purpose of this research is to clarify the possibility of making use of the collaboration with communities and residents in terms of road environment maintenance. We are going to collect examples of good practices and sort out what needs attention and what needs to be solved in the use of this system.

3. Examination for Continuous Use of Road Space

To respond to the increasing needs for the use of road space, the Ministry of Land, Infrastructure, Transport and Tourism promotes the activities of communities using such space.*² In the process of consensus building for the use of the space, such conditions as the influence on traffic and safety are discussed. However, information regarding the actual conditions of traffic when occupied and the effect of the use of road space is not accumulated; therefore, a lot of time is consumed to respond to the issues (Figure 1). This research is designed to propose an effective and efficient process to build consensus for the promotion of the use of road space. After extracting and sorting out the conditions that inhibited consensus



Photo 1: Activities of road cooperative body system (source: website of the Ministry of Land, Infrastructure, Transport and Tourism)

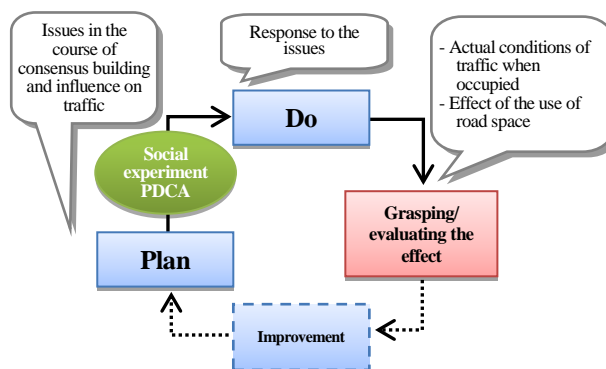


Figure 1: Information that Needs to be Shared for Smooth Consensus Building

building out of the actual cases, we are going to investigate and analyze the measures for smooth consensus building, the actual conditions of traffic when occupied and the effect of the use of such space.

For your reference:

1) Road cooperative body system

<https://www.mlit.go.jp/road/kyoryokudantai/index.html>

2) Road Bureau, MLIT: Guidelines for the Facilitation of Community Activities Using Roads, revised in March 2016