

Project with government, citizen and researcher towards Integrated Coastal Management

Coastal, Marine and Disaster Prevention Department
 Research Coordinator for Coastal and Marine Affairs (Dr. Eng.)
 FURUKAWA Keita

(Keywords) nature restoration, citizen participation, spiny goby

1. Integrated Coastal Management

ICM (Integrated Coastal Management) was described in Agenda 21 that was adopted in Rio Summit 1992 to achieve continuous development. Also in Japan, it is positioned as Basic Act on Ocean Policy adopted in 2007 through The 5th Comprehensive National Development Plan (cabinet approval in 1998) and Guideline for Integrated Coastal Management Plan (National Land Agency, 2000).

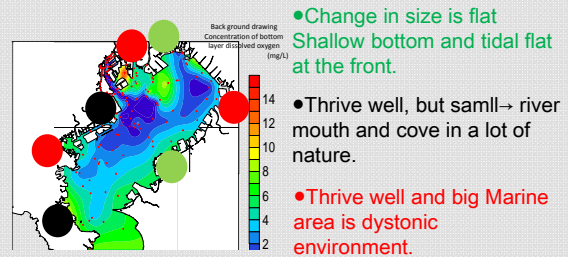
By implementing ICM, it considers the expanse of place and business, and it is thought that custom-made environment preservation / reclamation is possible based on participation of various related persons. NILIM has been trying various menus of ICM as an ecological correctness means.

2. Abode of spiny goby search project

In ICM, a goal of action which should be easy to understand for related people is needed. With that, a research was carried out and that was focused on spiny goby that is typical fish in Tokyo bay.

The research had been carried out between July and September in 2012. Special research sheets, rulers for measuring spiny goby were created, and it was reported by fax. (<http://www.meic.go.jp/edohaze>) 。 From the beginning, the general outline and recruitment for the research placed in fishing news papers / magazines and so on with the cooperation of the fishing journalist group. With a focus on fisherman, 240 people in total participated, and data of about 140 points and 8,000 fish is collected. (<http://www.meic.go.jp/edohaze>)

(<http://www.meic.go.jp>) 。 Therefore, these are became evident; average of fishing outcome is 20 fish per person in one hour in this season, and average of the entire length is 9 cm in July, 10 cm in August and 12 com in September. And along with it, effectiveness of featuring spiny goby as a symbol for Tokyo bay reclamation was indicated and it was presented in the 13th Tokyo Bay Symposium and placed in fishing magazines.



➔ River mouth and cove are effective, because small individual can become established.
 Marine area where is not dysoxic environment will be needed.

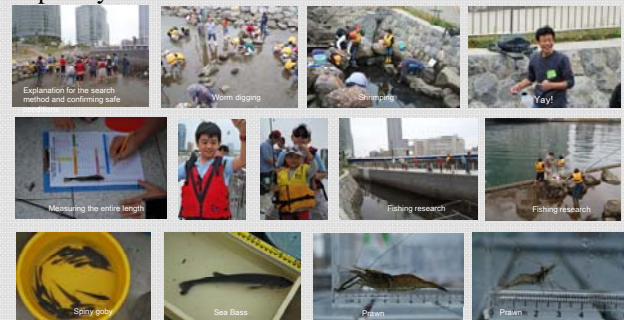
Fig. Graphic Conclusion of abode of spiny goby search project

3. Joyful use of urban tidal flat research team

Activation of activity as a citizen beyond area and affiliation are one of the important elements to promote ICM.

(<http://www.meic.go.jp/wiseflat>) 。 Participatory abode of creatures search research was conducted in an urban maritime park (Takashimasuisaisen Park) that has a tidal pond. (<http://www.meic.go.jp/wiseflat>) It was experienced as follows; worm digging research by tidal flat team of the tidal pond, and shrimping and goby fishing research using the worms by tidal pool team.

It was found as a potential desire for sea nature experience through these efforts. And those will hopefully be a momentum of ICM.



Pictures Abode of creatures

This research was achieved by a lot of related persons such as NPO, community residents, environment creation department city of Yokohama, Yokohama Minatomirai 21, Kanagawa Marine Fisheries Research Center, NILIM including Hamabetsukuri research group, Hamanoumiwoomou group, Tokyo Bay Sea Bass Project and etc.