

# Release of CommonMP

(Common Modeling Platform for water-material circulation analysis)

KIKUMORI Yoshito, Senior Researcher

HATTORI Atsushi, Head of River Div. YAMAMOTO Akira, Director of River Dept.

(Keywords) Hydraulic and hydrological analysis, software, consortium

## 1. Introduction

River Dept. has been developing the *CommonMP*, general-purpose platform for hydraulic and hydrological analysis since 2007. The *CommonMP* (Common Modeling Platform for water-material circulation analysis) is a software platform for analysis models such as river channel models and rain runoff models established to analyze water-material circulation in river basins and permit plural analysis models to mutually interact. *CommonMP* Ver1.0 was released in March 2010.

## 2. Utilization of CommonMP

The purpose of *CommonMP* is to stimulate R&D of hydraulic and hydrological analysis models. It is also intended to improve the skills of river engineers as they personally use it for flood forecasting in order to upgrade river management. Regional development bureaus and the Japan Civil Engineering Consultants Association

jointly hold training sessions to learn to disseminate *CommonMP*, while RDBs develop analysis models of the *CommonMP*. Handout documents are provided on the *CommonMP* web site for your reference. Regarding university activities, books<sup>\*1</sup> for lectures in universities were issued in March 2011.

## 3. Future Activities

River sectors and sewage sector organizations established the industry-government-academia consortium in July 2009. The consortium will promote all future *CommonMP* development and dissemination activities.

(Reference)

\*1 Michiharu SHIIBA, Yasuto TACHIKAWA, Introduction of the *CommonMP*  
*CommonMP* HP: <http://framework.nilim.go.jp>

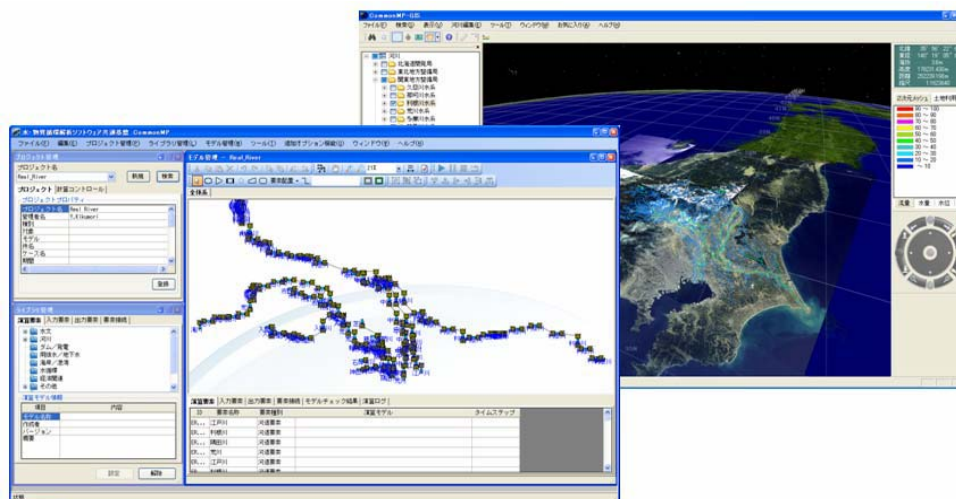


Image of a CommonMP screen